

2014 AIRPORT BENCHMARKING REPORT

Global Standards for Airport Excellence

Information Package

©Air Transport Research Society

2014 Airport Benchmarking Team

Project Coordinator:

Professor Tae H. OUM Air Transport Research Society

Research Director:

Dr. Yapyin Choo Air Transport Research Society

Professor Chunyan Yu Embry-Riddle Aeronautical University

North America:

Professor Bijan VASIGH (United States of America) Embry-Riddle Aeronautical University

Professor Jia YAN (United States of America) Washington State University

Asia Pacific:

Professor Peter FORSYTH (Australia) Monash University

Professor Paul Hooper (Australia) University of New South Wales

Professor Japhet Law (Hong Kong) Chinese University of Hong Kong

Professor Yuichiro YOSHIDA (Japan) International University of Japan

Professor Yeong-Heok LEE (Korea) Hankuk Aviation University

Professor Shinya HANAOKA (japan) Tokyo Institute of Technology

Professor Xiaowen Fu (Australia) The University of Sydney

Europe:

Professor Jaap de WIT (The Netherlands) University of Amsterdam

Professor Eric PELS (The Netherlands) Free University of Amsterdam

Professor Hans-Martin NIEMEIER (Germany) University of Applied Science

Professor Nicole ADLER (Israel) Hebrew University of Jerusalem

Headquarters Staff:

Amy Chung Research Assistant, Air Transport Research Society
JJ Qian Research Assistant, Air Transport Research Society
Jonathan Chen Research Assistant, Air Transport Research Society

Asia Pacific			
	Code	Airport Name	City, Country
1	ADL	Adelaide International Airport	Adelaide, Australia
2	AKL	Auckland International Airport	Auckland, New Zealand
3	BKK	Suvarnabhumi Airport	Bangkok, Thailand
4	BNE	Brisbane Airport	Brisbane, Australia
5	BOM	Chhatrapati Shivaji International Airport	Mumbai, India
6	CAN	Bai Yun Airport	Guangzhou, China
7	CEI	Mae Fah Luang-Chiang Rai International Airport	Chiang Rai, Thailand
8	CGK	Jakarta Soekarno-Hatta International Airport	Jakarta, Indonesia
9	CJU	Jeju International Airport	Jeju, Korea
10	CHC	Christchurch International Airport	Christchurch, New Zealand
11	CMB	Bandaranaike International Airport	Colombo, Sri Lanka
12	CNS	Cairns International Airport	Cairns, Australia
13	CNX	Chiang Mai International Airport	Chiang Mai, Thailand
14	DEL	Indira Gandhi International Airport	New Delhi, India
15	DRW	Darwin International Airport	Darwin, Australia
16	DUD	Dunedin International Airport	Dunedin, New Zealand
17	DXB	Dubai International Airport	Dubai, UAE
18	GMP	Seoul Gimpo International Airport	Seoul, South Korea
19	GUM	Antonio B. Won Pat International Airport	Hagatna, Guam
20	HAK	Haikou International Airport	Haikou, China
21	HDY	Hat Yai International Airport	Hat Yai, Thailand
22	HKG	Hong Kong International Airport	Hong Kong, China
23	HKT	Phuket International Airport	Phuket, Thailand
24	HND	Haneda Airport	Tokyo, Japan
25	ICN	Incheon International Airport	Incheon, Korea
26	KIX	Kansai International Airport	Osaka, Japan
27	KUL	Kuala Lumpur International Airport	Kuala Lumpur, Malaysia
28	MAA	Chennai International Airport	Chennai, India
29	MEL	Melbourne Airport	Melbourne, Australia
30	MFM	Macau International Airport	Macau, China
31	MNL	Ninoy Aquino International Airport	Manila, The Philippines
32	NAN	Nadi International Airport	Nadi, Fiji
33	NGO	Central Japan International Airport	Nagoya, Japan
34	NRT	Tokyo Narita International Airport	Tokyo, Japan
35	NTL	Newcastle Airport	Newcastle, Australia
36	OOL	Gold Coast Airport	Gold Coast, Australia
37	PEK	Beijing Capital International Airport	Beijing, China
38	PEN	Penang International Airport	Penang, Malaysia
39	PER	Perth International Airport	Perth, Australia
40	PNH	Phnom Penh International Airport	Phnom Penh, Cambodia
41	PUS	Gimhae International Airport	Busan, Korea
42	PVG	Shanghai Pudong International Airport	Shanghai, China
43	REP	Siem Reap International Airport	Siem Reap, Cambodia
44	SHA	Shanghai Hongqiao International Airport	Shanghai, China
45	SIN	Singapore Changi International Airport	Singapore, Singapore
46	SUB	Juanda International Airport	Sidoarjo, Indonesia
47	SYD	Sydney Airport	Sydney, Australia
48	SZX	Shenzhen Bao'an International Airport	Shenzhen, China
49	TPE	Taiwan Taoyuan International Airport	Taipei, Taiwan
50	TSV	Townsville Airport	Townsville, Australia
51	WLG	Wellington International Airport	Wellington, New Zealand
52	XMN	Xiamen Gaoqi International Airport	Xiamen, China
53	ZQN	Queenstown Airport	Frankton, New Zealand

Europe			
	Airport Code	Airport Name	City, Country
54	AGP	Malaga-Costa del Sol Airport	Malaga, Spain
55	ALC	Alicante Airport	El Altet - Torrellano, Spain
56	AMS	Amsterdam Airport Schiphol	Amsterdam, The Netherlands
57	ARN	Stockholm-Arlanda Airport	Stockholm, Sweden
58	ATH	Athens International Airport	Athens, Greece
59	BCN	Barcelona El Prat Airport	Barcelona, Spain
60	BEG	Belgrade Nikola Tesla Airport	Belgrade, Serbia
61	BGY	Bergamo-Orio al Serio Airport	Bergamo, Italy
62	BHX	Birmingham Airport	Birmingham, England
63	BLQ	Bologna Airport	Bologna, Italy
64	BRS	Bristol Airport	Lulsgate Bottom, England
65	BRU	Brussels Airport	Brussels, Belgium
66	BSL	EuroAirport Basel-Mulhouse-Freiburg	Basel, Switzerland
67	BTS	Bratislava Milan Rastislav Stefanik Airport	Bratislava, Slovakia
68	BUD	Budapest Ferenc Liszt International Airport	Budapest, Hungary
69	CDG	Paris Charles de Gaulle Airport	Paris, France
70	CGN	Cologne/Bonn Konrad Adenauer Airport	Cologne, Germany
71	CIA	Rome Ciampino Airport	Rome, Italy
72	CPH	Copenhagen Airport Kastrup	Copenhagen, Denmark
73	DUB	Dublin Airport	Dublin, Ireland
74	DUS	Düsseldorf International Airport	Düsseldorf, Germany
75	EDI	Edinburgh Airport	Edinburgh, Scotland
76	FCO	Rome Leonardo Da Vinci/Fiumicino Airport	Rome, Italy
77	FRA	Frankfurt Airport	Frankfurt, Germany
78	GLA	Glasgow Airport	Renfrewshire, Scotland
79	GVA	Genève Aéroport	Geneva, Switzerland
80	HAJ	Hannover Airport	Langenhagen, Germany
81	HAM	Hamburg Airport	Hamburg, Germany
82	HEL	Helsinki Vantaa Airport	Helsinki, Finland
83	IST	Istanbul Atatürk Airport	Istanbul, Turkey
84	KBP	Kiev Boryspil International Airport	Kiev, Ukraine
85	KEF	Keflavik International Airport	Reykjanesbaer, Iceland
86	LED	Pulkovo Airport	Saint Petersburg, Russia
87	LGW	London Gatwick International Airport	London, England
88	LHR	London Heathrow Airport	London, England
89	LIN	Milan Linate Airport	Milan, Italy
90	LIS	Lisbon Portela Airport	Lisbon, Portugal
91	LJU	Ljubljana Jože Pučnik Airport	Ljubljana, Slovenia
92	LPA	Gran Canaria Airport	Teldi, Spain
93	LTN	London Luton Airport	London, England
94	LUX	Luxembourg Airport	Findel, Luxembourg
95	LYS	Lyon-Saint Exupery Airport	Colombier-Saugnieu, France
96	MAD	Madrid Barajas Airport	Madrid, Spain
97	MAN	Manchester Airport	Manchester, England
98	MLA	Malta International Airport	Valletta, Malta
99	MUC	Munich Airport	Munich, Germany
100	MPX	Milan Malpensa Airport	Milan, Italy
101	NAP	Naples International Airport	Naples, Italy
102	NCE	Nice Cote D'Azur Airport	Nice, France
103	OPO	Porto Airport	Porto, Portugal

Airports included in the ATRS Airport Benchmarking Report (Cont.)

Europe			
Airport Code	Airport Name	City, Country	
104	ORY	Paris Orly Airport	Paris, France
105	OSL	Oslo Airport Gardermoen	Oslo, Norway
106	PMI	Palma de Mallorca Airport	Palma de Mallorca, Spain
107	PRG	Prague International Airport	Prague, Czech Republic
108	RIX	Riga International Airport	Riga, Latvia
109	SAW	Istanbul Sabiha Gökçen International Airport	Istanbul, Turkey
110	SOF	Sofia Airport	Sofia, Bulgaria
111	STN	London Stansted Airport	London, England
112	STR	Stuttgart Airport	Stuttgart, Germany
113	SZG	Salzburg W.A. Mozart Airport	Salzburg, Austria
114	TLL	Lennart Meri Tallinn Airport	Tallinn, Estonia
115	TLV	Ben Gurion International Airport	Tel Aviv, Israel
116	TRN	Turin Caselle Airport	Turin, Italy
117	TXL	Berlin Tegel Airport	Berlin, Germany
118	VCE	Venice Marco Polo Airport	Venice, Italy
119	VIE	Vienna International Airport	Vienna, Austria
120	WAW	Warsaw Chopin Airport	Warsaw, Poland
121	ZAG	Zagreb Airport	Zagreb, Croatia
122	ZRH	Zurich Airport	Zurich, Switzerland

North America - United States			
Code	Airport Name	City, State	
123	ABQ	Albuquerque International Sunport	Albuquerque, New Mexico
124	ALB	Albany International Airport	Albany, New York
125	ANC	Ted Stevens Anchorage International Airport	Anchorage, Alaska
126	ATL	Hartsfield-Jackson Atlanta International Airport	Atlanta, Georgia
127	AUS	Austin Bergstrom Airport	Austin, Texas
128	BDL	Bradley International Airport	Windsor Locks, Connecticut
129	BNA	Nashville International Airport	Nashville, Tennessee
130	BOS	Boston Logan International Airport	Boston, Massachusetts
131	BUR	Bob Hope Airport	Burbank, California
132	BWI	Baltimore Washington International Airport	Baltimore, Maryland
133	CLE	Cleveland-Hopkins International Airport	Cleveland, Ohio
134	CLT	Charlotte Douglas International Airport	Charlotte, North Carolina
135	CMH	Port Columbus International Airport	Columbus, Ohio
136	CVG	Cincinnati/Northern Kentucky International Airport	Cincinnati, Ohio
137	DAL	Dallas Love Field Airport	Dallas, Texas
138	DCA	Ronald Reagan Washington National Airport	Washington, DC
139	DEN	Denver International Airport	Denver, Colorado
140	DFW	Dallas Fort Worth International Airport	Dallas, Texas
141	DTW	Detroit Metropolitan Wayne County Airport	Detroit, Michigan
142	EWR	Newark Liberty International Airport	Newark, New Jersey
143	FLL	Fort Lauderdale Hollywood International Airport	Ft. Lauderdale, Florida
144	HNL	Honolulu International Airport	Honolulu, Hawaii
145	HOU	William P. Hobby Airport	Houston, Texas
146	IAD	Washington Dulles International Airport	Washington, DC
147	IAH	George Bush Intercontinental Airport	Houston, Texas
148	IND	Indianapolis International Airport	Indianapolis, Indiana
149	JAX	Jacksonville International Airport	Jacksonville, Florida
150	JFK	New York-John F. Kennedy International Airport	New York, New York
151	LAS	Las Vegas McCarran International Airport	Las Vegas, Nevada
152	LAX	Los Angeles International Airport	Los Angeles, California

North America - United States			
Code	Airport Name	City, State	
153	LGA	LaGuardia International Airport	New York, New York
154	MCI	Kansas City International Airport	Kansas City, Missouri
155	MCO	Orlando International Airport	Orlando, Florida
156	MDW	Chicago Midway Airport	Chicago, Illinois
157	MEM	Memphis International Airport	Memphis, Tennessee
158	MIA	Miami International Airport	Miami, Florida
159	MKE	General Mitchell International Airport	Milwaukee, Wisconsin
160	MSP	Minneapolis/St. Paul International Airport	Minneapolis, Minnesota
161	MSY	Louis Armstrong New Orleans International Airport	New Orleans, Louisiana
162	OAK	Oakland International Airport	Oakland, California
163	OKC	Will Rogers World Airport	Oklahoma City, Oklahoma
164	ONT	LA/Ontario International Airport	Ontario, California
165	ORD	Chicago O'Hare International Airport	Chicago, Illinois
166	PBI	Palm Beach International Airport	West Palm Beach, Florida
167	PDX	Portland International Airport	Portland, Oregon
168	PHL	Philadelphia International Airport	Philadelphia, Pennsylvania
169	PHX	Phoenix Sky Harbor International Airport	Phoenix, Arizona
170	PIT	Pittsburgh International Airport	Pittsburgh, Pennsylvania
171	PVD	Theodore Francis Green State Airport	Warwick, Rhode Island
172	RDU	Raleigh-Durham International Airport	Raleigh, North Carolina
173	RIC	Richmond International Airport	Richmond, Virginia
174	RNO	Reno/Tahoe International Airport	Reno, Nevada
175	RSW	Southwest Florida International Airport	South Fort Myers, Florida
176	SAN	San Diego International Airport	San Diego, California
177	SAT	San Antonio International Airport	San Antonio, Texas
178	SDF	Louisville International-Standiford Field	Louisville, Kentucky
179	SEA	Seattle-Tacoma International Airport	Seattle, Washington
180	SFO	San Francisco International Airport	San Francisco, California
181	SJC	Norman Y. Mineta San José International Airport	San José, California
182	SLC	Salt Lake City International Airport	Salt Lake City, Utah
183	SMF	Sacramento International Airport	Sacramento, California
184	SNA	John Wayne Orange County Airport	Costa Mesa, California
185	STL	St. Louis-Lambert International Airport	St. Louis, Missouri
186	TPA	Tampa International Airport	Tampa, Florida
187	TUL	Tulsa International Airport	Tulsa, Oklahoma
188	TUS	Tucson International Airport	Tucson, Arizona

North America - Canada			
Code	Airport Name	City, Province	
189	YEG	Edmonton International Airport	Edmonton, Alberta
190	YHZ	Halifax Stanfield International Airport	Halifax, Nova Scotia
191	YOW	Ottawa Macdonald-Cartier International Airport	Ottawa, Ontario
192	YQB	Québec City Jean Lesage International Airport	Québec City, Québec
193	YQR	Regina International Airport	Regina, Saskatchewan
194	YUL	Montréal-Pierre Elliott Trudeau International Airport	Montréal, Québec
195	YVR	Vancouver International Airport	Vancouver, British Columbia
196	YWG	Winnipeg James Armstrong Richardson International Airport	Winnipeg, Manitoba
197	YYC	Calgary International Airport	Calgary, Alberta
198	YYJ	Victoria International Airport	Victoria, British Columbia
199	YYT	St. John's International Airport	St. John's, Newfoundland
200	YYZ	Toronto Lester B. Pearson International Airport	Toronto, Ontario

Asia Pacific - Major Airport Authorities			
	Code	Authority Name	Country
G1	AAI	Airports Authority of India	India
G2	ADG	Airport Development Group	Australia
G3	AOT	Airports of Thailand Public Company Limited	Thailand
G4	APAC	Australia Pacific Airports Corporation	Australia
G5	API	P.T. (Persero) Angkasa Pura I	Indonesia
G6	APII	P.T. (Persero) Angkasa Pura II	Indonesia
G7	KAC	Korea Airports Corporation	Korea
G8	MAHB	Malaysia Airports Holding Berhad	Malaysia
G9	QAL	Queensland Airport Limited	Australia

Europe - Major Airport Authorities			
	Airport Code	Authority Name	Country
G10	ADP	Aéroports de Paris	France
G11	ADR	Aeroporti di Roma	Italy
G12	AENA	Aeropuertos Espanoles y Navegacion Aerea	Spain
G13	ANA	Aeropostos de Portugal	Portugal
G14	Avinor	Avinor Group	Norway
G15	Berlin	Berlin Airports	Germany
G16	DAA	Dublin Airport Authority	Ireland
G17	Finavia	Finavia Oyj	Finland
G18	Fraport	Fraport AG	Germany
G19	Heathrow	Heathrow Airport Holdings Limited	United Kingdom
G20	Isavia	Isavia	Iceland
G21	MAG	Manchester Airports Group	United Kingdom
G22	PPL	Polish Airports State Enterprise	Poland
G23	Schiphol	Schiphol Group	The Netherlands
G24	SEA	Società Enti Aeroportuali (SEA) Aeroporti di Milano	Italy
G25	Swedavia	Swedavia	Sweden
G26	TAV	TAV Airports Holding	Turkey

The ATRS Benchmarking Report consists of three parts:

- **Part I** provides a summary of the research approach and key results. It contains 9 summary tables and 10 summary charts covering the main aspects of airport operations and management, including labour productivity, soft cost input productivity, residual variable factor productivity, and revenue generation.

- **Part II** is the main body of the report. It provides over 200 charts and tables comparing most dimensions of airport performance across airports. It also provides comparisons of the status of the airports in terms of traffic volume, number of employees and terminal-airside capacity. A comparison of airport charges including landing and passenger charges is also presented.

- **Part III** of the report presents a short description of each airport including a section on new development and on recent awards. It also includes information on capacity and traffic (with time series data), airport charges as well as highlights of the current revenue, and profit margin. In addition, a summary of the airport charges is also included.

- This report includes:
 - 200 airports**
 - 26 airports groups/authorities**

THE REPORT

The main objective of this report is to measure and compare the performance of several important aspects of airport operation including:

- **Productivity and Efficiency**
- **Unit Costs and Unit Competitiveness**
- **Financial Results**
- **Airport Charges**

The report also examines the relationship between various performance measures and airport characteristics in order to better explain the differences in airport performance.

PRODUCTIVITY AND EFFICIENCY

The report measures and compares a number of partial measures of productivity including labour productivity, capital productivity, and “soft cost input” productivity. These include the typical partial performers such as passengers per employee, passengers per gate etc.

In addition, this report introduces a number of new partial productivity measures including the “soft cost input” productivity. “Soft cost input” productivity, a measure unique to the ATRS Benchmarking Report, is a catch-all input which includes all expenses other than labour and capital and is used primarily to take into account the cost of buying in outsourced services.

The soft cost input account for 28% to 93% of an airports non-capital expenditures, as such, it is extremely important to consider this soft cost in examining airport performance.

UNIT COST AND UNIT COMPETITIVENESS

The report presents a number of unit cost measures. These include measures such as labour cost per passenger, labour cost per aircraft movement, etc. A unit cost index provides a means by which to examine the relationship to various airport characteristics and airport service levels.

FINANCIAL RESULTS

The report presents a number of revenue generation indicators and common financial ratios, including aeronautical revenue per aircraft movement, total revenue per passenger, return on equity, current ratio, return on asset, etc. A yield for total revenue per unit of output is also provided as an overall revenue generation indicator.

AIRPORT CHARGES

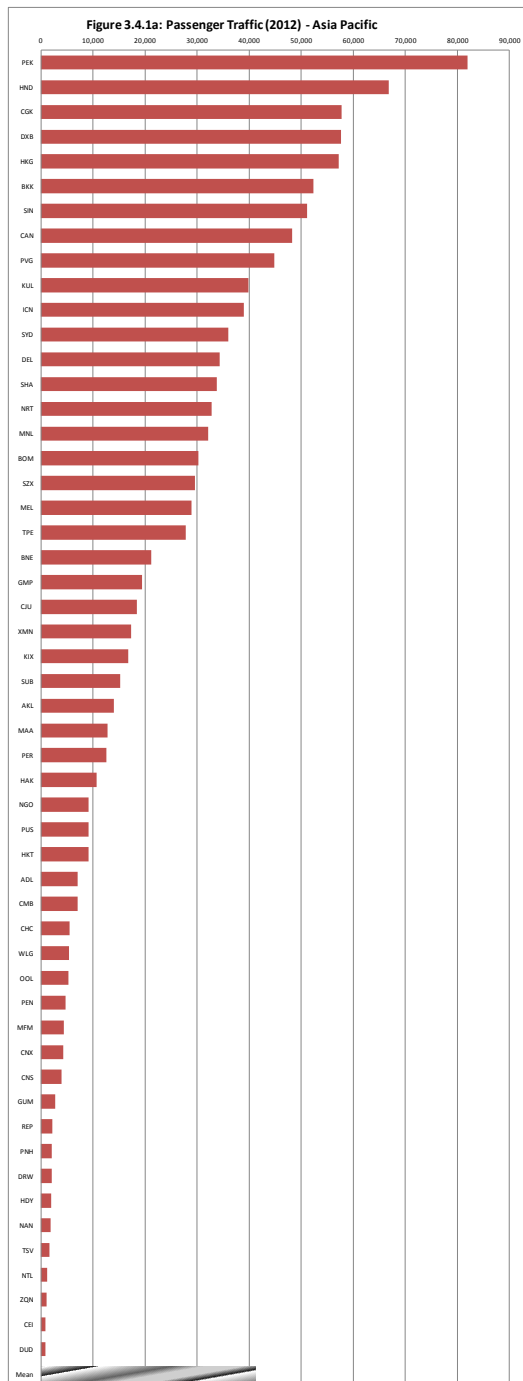
One means for airports to derive revenues is through charges associated with aeronautical activities. Aeronautical charges are levied for the use of an airport’s runway, apron and terminal facilities. Landing charges, typically based on the weight of the aircraft, terminal (Passenger) charges, generally levied on the number of passengers at time of departure, and aeronautical fee as a whole are compared in the report. Three types of aircraft reflecting different aircraft weight classes are considered: **Boeing 747-400, Boeing 767-400, Boeing 737-800, Airbus 321, and CRJ 200.** A breakdown of landing charges by weight categories and passenger charges by boarding passenger is also included.



Samples

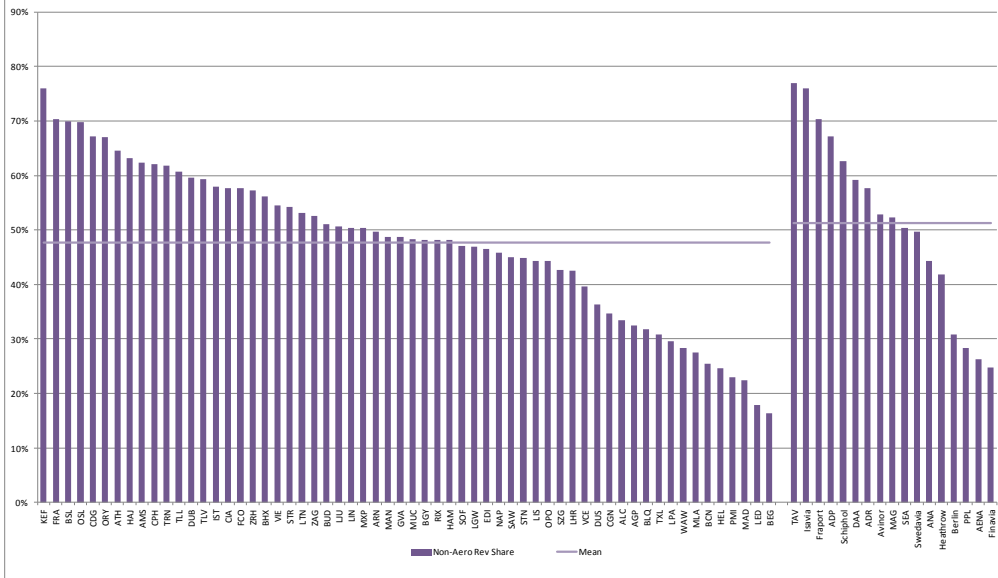
Samples

Passenger Traffic – Asia Pacific (in thousands)

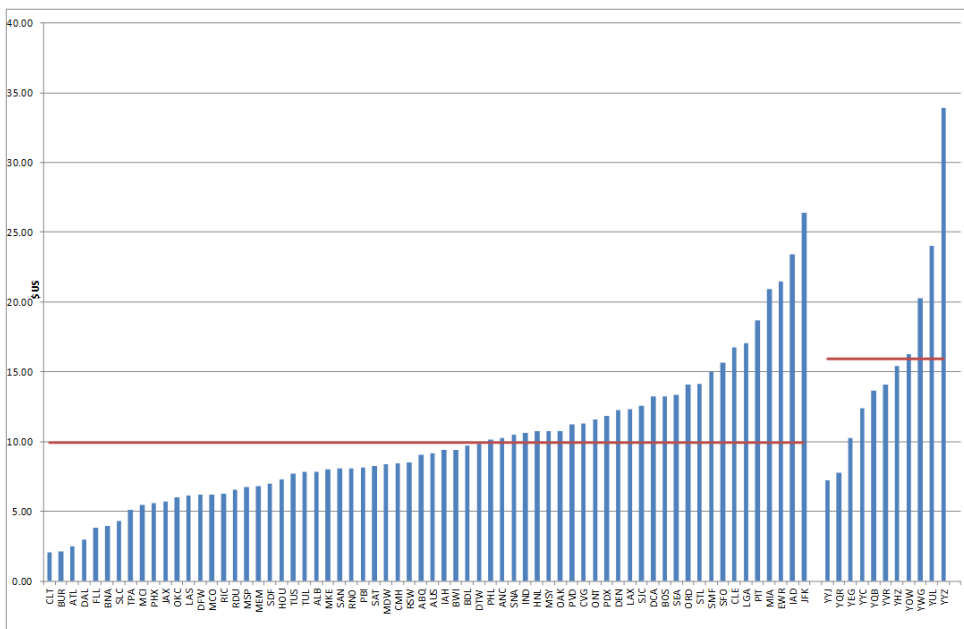


Airport Code	2008	2009	2010	2011	2012	%Change 11-12	%Change 08-12
PEK	55,938	65,372	73,948	78,675	81,929	4.1%	46.5%
HND	65,595	62,091	63,631	63,709	66,795	4.8%	1.8%
CGK	32,241	37,144	44,356	48,948	57,773	18.0%	79.2%
DXB	37,441	40,902	47,200	50,980	57,700	13.2%	54.1%
HKG	47,700	46,928	50,923	53,904	57,200	6.1%	19.9%
BKK	46,932	38,483	42,497	47,801	52,369	9.6%	11.6%
SIN	37,285	38,611	42,983	47,951	51,182	6.7%	37.3%
CAN	33,435	37,049	40,976	45,040	48,309	7.3%	44.5%
PVG	28,236	31,921	40,579	41,448	44,880	8.3%	58.9%
KUL	27,529	29,682	34,088	37,705	39,888	5.8%	44.9%
ICN	29,974	28,550	33,479	35,158	38,971	10.8%	30.0%
SYD	32,874	32,998	35,562	35,631	35,987	1.0%	9.5%
DEL	22,843	26,125	29,943	35,882	34,368	-4.2%	50.5%
SHA	22,877	25,079	31,299	33,112	33,829	2.2%	47.9%
NRT	38,598	41,511	32,391	33,340	32,794	-1.6%	-15.0%
MNL	21,994	24,109	24,224	29,552	32,100	8.6%	46.0%
BOM	23,436	26,607	29,072	30,748	30,208	-1.8%	28.9%
SZX	21,401	24,486	26,714	28,246	29,570	4.7%	38.2%
MEL	24,130	24,770	26,290	27,963	28,918	3.4%	19.8%
TPE	21,936	21,617	25,114	24,948	27,837	11.6%	26.9%
BNE	18,690	19,063	19,240	20,249	21,182	4.6%	13.3%
GMP	14,265	15,370	17,566	18,514	19,429	4.9%	36.2%
CJU	-	13,643	15,724	14,202	18,443	29.9%	-
XMN	9,385	11,328	13,206	15,757	17,354	10.1%	84.9%
KIX	15,330	13,516	14,176	13,857	16,799	21.2%	9.6%
SUB	9,122	10,563	12,079	13,778	15,259	10.7%	67.3%
AKL	13,203	13,013	13,448	13,824	14,006	1.3%	6.1%
MAA	9,819	10,557	12,050	12,925	12,777	-1.1%	30.1%
PER	9,179	9,735	10,464	11,451	12,633	10.3%	37.6%
HAK	8,222	8,391	8,774	10,168	10,697	5.2%	30.1%
NGO	10,809	9,260	9,211	8,891	9,211	3.6%	-14.8%
PUS	-	6,870	8,161	8,749	9,196	5.1%	-
HKT	5,943	5,457	6,797	8,206	9,161	11.6%	54.1%
ADL	6,725	6,936	7,159	7,397	7,099	-4.0%	5.6%
CMB	4,643	4,242	5,260	6,146	7,079	15.2%	52.5%
CHC	5,905	5,908	6,006	5,776	5,552	-3.9%	-6.0%
WLG	5,256	5,118	5,135	5,192	5,374	3.5%	2.3%
OOL	4,323	4,619	5,290	5,486	5,327	-2.9%	23.2%
PEN	3,406	3,325	4,167	4,600	4,768	3.6%	40.0%
MFM	5,098	4,250	4,079	4,045	4,366	7.9%	-14.4%
CNX	3,276	2,878	3,183	3,680	4,335	17.8%	32.3%
CNS	3,963	3,550	3,672	3,859	3,943	2.2%	-0.5%
GUM	2,800	2,497	2,807	2,625	2,714	3.4%	-3.1%
REP	1,532	1,255	1,598	1,826	2,223	21.7%	45.1%
PNH	1,692	1,588	1,719	1,840	2,077	12.9%	22.8%
DRW	1,813	1,998	2,140	2,287	2,045	-10.6%	12.8%
HDY	1,380	1,284	1,465	1,835	2,013	9.7%	45.9%
NAN	1,995	1,890	1,994	2,231	1,857	-16.8%	-6.9%
TSV	1,366	1,436	1,645	1,677	1,693	0.9%	24.0%
NTL	1,066	1,173	1,127	1,211	1,184	-2.2%	11.1%
ZQN	700	684	812	924	1,047	13.3%	49.6%
CEI	772	649	724	805	926	15.1%	19.9%
DUD	709	770	778	777	854	9.9%	20.5%
Mean	16,760	17,091	18,810	20,104	21,419	6.5%	27.8%

Figure 6.1.1b: Non-Aeronautical Revenue Share (2012) - Europe



Airport Charges – Cost per enplaned passenger



Part III – Sample Airport Profile

Albuquerque International Sunport ABQ

Albuquerque, New Mexico Fiscal Year-End: 6/30/2012

Website: <http://www.cabq.gov/airport/>

Ownership & Management

Albuquerque International Sunport is operated by the City's Department of Aviation and is owned by the City of Albuquerque.

Passenger and Cargo Traffic

Capacity

Runways	4
Terminal Size (m ²)	50,368
Gates	23
Employees	277

Air Movement and Pax/Movement

Traffic

% International FAX	0.01%
Dominant Carrier	Southwest Airlines
% of Dominant Carrier	57.3%
Movements per Day	266
Daily Gate Utilization (FAX)	651

Airport Charges

Landing charge (USD)	
Based on MGLW:	
Signature carriers: USD 2.12 per 1000 lbs	
Non-signatory: USD 2.44 per 1000lbs	
Parking charge (USD)	
Not Specified	
Passenger charge (USD)	
Passenger Facility Charge: 4.50 per departing passenger	

Notes and Observations

- A reconstruction project of the ~~640,000~~ long-term parking lot began on January 14, 2012. However, the lot will close from December 24, 2012 in order to have the lot emptied by the start of construction.
- On April 5, 2012, JetBlue Airways CEO Dave Barger stated the carrier is considering launching direct services to Albuquerque International ~~640,000~~ from New York with Mr. Barger claimed that New Mexico is a 'gold market' for the carrier.
- Albuquerque International ~~640,000~~ announced the completion of its parking structure solar project on May 29, 2012. The final phase of the project consists of five arrays that will provide power directly to the terminal building. The eight existing arrays currently provide power to the parking structure itself and since 2009, have reduced the energy bill for the structure by 75%. The project was funded partly by a USD 1.8 million Voluntary Airport Low Emissions grant from the FAA.

Operating Rev Mix

Part I. Summary Report

- Background and Objectives
- Summary of Results
 - Results on the Productivity Measurement and Analysis
 - Partial Productivity Measures
 - Labour Productivity
 - Soft Cost Input Productivity
 - Capital Productivity
 - Variable Factor Productivity
 - Gross Variable Factor Productivity
 - Residual Variable Factor Productivity
 - Unit Variable Cost and Cost Competitiveness
 - Airport Cost Structure
 - Unit Variable Cost
 - Cost Competitiveness
 - Airport Financial Performance
 - Revenue Share
 - Revenue generation
 - Financial Profitability
 - Airport Rate and Charges
- Summary Tables
 - Summary Tables of Productivity and Efficiency
 - Summary Tables of Airport Cost Performance
 - Summary Tables of Airport Revenue
- Summary Figures

Part II. Analysis and Full Results

1. Introduction
 - 1.1 Objectives
 - 1.2 Approach and Scope
2. Sample Airports
3. Airport Capacities and Traffic Volume
 - 3.1 Airside Capacity
 - 3.2 Terminal-Side Capacity
 - 3.2.1 Number of Gates
 - 3.2.2 Terminal Size
 - 3.3 Number of Employees
 - 3.4 Traffic Volume
 - 3.4.1 Passenger Traffic
 - 3.4.2 Cargo Traffic
 - 3.4.3 Work Load Unit (WLU)
 - 3.4.4 Aircraft Movements
 - 3.4.5 Passengers per Aircraft Movement
 - 3.5 Market Share of Dominant Hub Carrier
4. Airport Productivity and Efficiency Performance
 - 4.1 Outputs and Inputs
 - 4.2 Partial Productivity Measures
 - 4.2.1 Labor Productivity
 - 4.2.1.1 Number of Passengers per Employee
 - 4.2.1.2 Aircraft Movements per Employee

- 4.2.1.3 Work Load Units (WLU) per Employee
 - 4.2.1.4 Overall Labor Productivity
 - 4.2.2 Capital Productivity
 - 4.2.2.1 Passengers per Gate
 - 4.2.2.2 Passengers per Square Meter of Terminal Space
 - 4.2.2.3 Aircraft Movement per Runway
 - 4.2.3 Productivity of Soft Cost Input
 - 4.2.3.1 Soft Cost Input Productivity with Passengers as Output
 - 4.2.3.2 Soft Cost Input Productivity-Overall Output Index
 - 4.3 Variable Factor Productivity
 - 4.4 Factors Affecting Productivity
 - 4.4.1 Labour Productivity and Airport Size
 - 4.4.2 Labour Productivity vs. International Traffic
 - 4.4.3 Labour Productivity vs. Cargo Traffic
 - 4.4.4 Capital Productivity vs. Airport Size
 - 4.4.5 Capital Productivity vs. International Traffic
 - 4.4.6 Soft Cost Input Productivity vs. Airport Size
 - 4.4.7 Soft Cost Input Productivity vs. Share of International Traffic
 - 4.4.8 Variable Factor Productivity vs. Airport Characteristics
 - 4.5 Variable Factor Productivity Decomposition and Productive Efficiency
 - 4.5.1 VFP Regression
 - 4.5.2 Residual Variable Factor Productivity
- Appendix 4A Comparison of VFP and Stochastic Cost Frontier
Stochastic Cost Frontier Function Estimation
Comparison of Residual VFP and Cost Frontier Results
5. Airport Cost Performance
 - 5.1 Airport Cost Structure
 - 5.1.1 Labour Cost Share
 - 5.1.2 Soft Cost Shares
 - 5.2 Unit Cost
 - 5.2.1 Labour Cost per Passenger
 - 5.2.2 Labour Cost per Aircraft Movement
 - 5.2.3 Labour Cost per Work Load Unit
 - 5.2.4 Variable Cost per Passenger
 - 5.2.5 Variable Cost per Aircraft Movement
 - 5.2.6 Variable Cost per Work Load Unit
 - 5.2.7 Unit Variable Cost Index
 - 5.3 Factors Affecting Unit Costs
 - 5.3.1 Input Prices
 - 5.3.1.1 Average Annual Employee Compensation
 - 5.3.1.2 Variable Input Price Index
 - 5.3.2 Unit Variable Cost vs. Labour Price
 - 5.3.3 Unit Variable Cost vs. Airport Size
 - 5.3.4 Unit Variable Cost vs. Airport Characteristics
 - 5.4 Cost Competitiveness
6. Airport Financial Performance
 - 6.1 Revenue Shares
 - 6.1.1 Non-Aeronautical Revenue Share
 - 6.1.2 Aeronautical Revenue Share
 - 6.1.3 Concession Revenue Share
 - 6.1.4 Parking Revenue Share
 - 6.2 Revenue Generation
 - 6.2.1 Aeronautical Revenue per Aircraft Movement
 - 6.2.2 Concession Revenue per Passenger

6.2.3	Operating Revenue per Passenger	4.1.1a	Input Measures – Asia Pacific
6.2.4	Operating Revenue per Aircraft Movement	4.1.1b	Input Measures – Europe
6.2.5	Operating Revenue per Work Load Unit	4.1.1c	Input Measures – North America
6.2.6	Operating Revenue per Employee	4.1.2a	Output Measures – Asia Pacific
6.3	Financial Profitability	4.1.2b	Output Measures – Europe
6.3.1	Net Operating Income	4.1.2c	Output Measures – North America
6.3.2	EBITDA	4.5.1a	VFP Regression Results – Asia Pacific
6.3.3	Operating Margin	4.5.1b	VFP Regression Results – Europe
6.3.4	Current Ratio	4.5.1c	VFP Regression Results – North America
6.3.5	Return on Asset	4A-1	Cost Frontier Function Estimation Results
6.3.6	Return on Equity		
6.3.7	Debt-Asset Ratio		
6.3.8	Debt-Equity Ratio		
7.	Airport Rates and Charges	7.1a	Landing Charges – Asia Pacific
7.1	Landing Charges	7.1b	Landing Charges – Europe
7.2	Terminal (Passenger) Charges	7.1c	Landing Charges – North America
7.3	Combined Landing and Passenger Charges	7.2.1a	Terminal (Passenger) Charges for International Flights– Asia Pacific
7.3.1	Combined Landing and Passenger Charges without Baggage and Check-in Charges	7.2.1b	Terminal (Passenger) Charges for International Flights – Europe
7.3.2	Combined Landing and Passenger Charges with Baggage and Check-in Charges	7.2.1c	Average Terminal (Passenger) Charges – North America
7.4	Cost per Enplaned Passenger	7.2.2a	Terminal (Passenger) Charges with Baggage and Check-in Charges-Asia Pacific
7.5	Air Travel Security Charges	7.2.2b	Terminal (Passenger) Charges with Baggage and Check-in Charges-Europe
7.6	Other Airport Charges	7.3.1a	Combined Landing and Terminal Charges without Baggage and Check-in Charges– Asia Pacific
		7.3.1b	Combined Landing and Terminal Charges without Baggage and Check-in Charges–Europe
		7.3.2a	Combined Landing and Terminal Charges with Baggage and Check-in Charges-Asia Pacific
		7.3.2b	Combined Landing and Terminal Charges with Baggage and Check-in Charges-Europe
		7.4	Cost per Enplaned Passenger-North America
		7-5a	Air Travel Security Charges – Asia Pacific
		7-5b	Airport Security Charges – Europe
		7-5c	Airport Security Charges – North America
		7-6a	Other Airport Charges – Asia Pacific
		7-6b	Other Airport Charges – Europe
		7-6c	Other Airport Charges – North America

Part III. Airport Profiles, Methodologies and Data Description	
Appendix I Airport Profiles	
Asia Pacific Airports	
European Airports	
North American Airports	
Appendix II Methodology: Computation of Total Factor Productivity	
Appendix III Data and Data Sources	
List of Tables	
S-1	Sample Airports
S-2	Airport Characteristics
S-3	Partial Factor Productivity Measures
S-4	Other Partial Productivity Measures
S-5	Gross Variable Factor Productivity
S-6	Residual Variable Factor Productivity
S-7	Unit Variable Cost and Airport Cost Competitiveness
S-8	Revenue Shares
S-9	Revenue Generation Indicators
2-1a	Sample Airports-Asia Pacific
2-1b	Sample Airports-Europe
2-1c	Sample Airports-North America
2-2a	Airport Characteristics-Asia Pacific
2-2b	Airport Characteristics-Europe
2-2c	Airport Characteristics-North America
3.1a	Length of Runways –Asia Pacific
3.1b	Length of Runways –Europe
3.1c	Length of Runways –North America

List of Figures	
S-1	Labor Productivity
S-2	Soft Cost Input Productivity
S-3	Passengers per Square Meter of Terminal Area
S-4	Residual Variable Factor Productivity
S-5	Non-Aeronautical Revenue Share
S-6	Revenue per Passenger
S-7	Revenue per Employee
S-8	Landing Charges for Boeing 737
S-9	Landing Charges for Airbus 320
S-10	Combined Landing and Passenger Charges
3.2.1a	Number of Gates – Asia Pacific
3.2.1b	Number of Gates – Europe
3.2.1c	Number of Gates – North America
3.2.2a	Passenger Terminal Size – Asia Pacific
3.2.2b	Passenger Terminal Size – Europe

3.2.2c	Passenger Terminal Size – North America	4.3a	Gross Variable Factor Productivity – Asia Pacific
3.3a	Number of Employees – Asia Pacific	4.3b	Gross Variable Factor Productivity – Europe
3.3b	Number of Employees – Europe	4.3c	Gross Variable Factor Productivity – North America
3.3c	Number of Employees – North America	4.4.1a	Passengers per Employee vs. Airport Size
3.4.1a	Passenger Traffic – Asia Pacific	4.4.1b	Labour Productivity vs. Airport Size
3.4.1b	Passenger Traffic – Europe	4.4.2a	Passengers per Employee vs. Share of International Traffic
3.4.1c	Passenger Traffic – North America	4.4.2b	Labour Productivity vs. Share of International Traffic
3.4.1d	International Share Passenger Traffic – Asia Pacific	4.4.3a	Passengers per Employee vs. Share of Cargo Traffic
3.4.1e	International Share Passenger Traffic – Europe	4.4.3b	Labour Productivity vs. Share of Cargo Traffic
3.4.1f	International Share Passenger Traffic – North America	4.4.4a	Passengers per Gate vs. Airport Size
3.4.1g	Seat Share of Inter-Continental Flights – Asia Pacific	4.4.4b	Passengers per Terminal Square Meter Area vs. Airport Size
3.4.1h	Seat Share of Inter-Continental Flights – Europe	4.4.4c	Aircraft Movements per Runway vs. Airport Size
3.4.1i	Seat Share of Inter-Continental Flights – North America	4.4.5a	Passengers per Gate vs. Share of International Traffic
3.4.2a	Cargo Traffic – Asia Pacific	4.4.5b	Passengers per Square Meter of Terminal Space vs. Share of International Traffic
3.4.2b	Cargo Traffic – Europe	4.4.5c	Aircraft Movement per Runway vs. Share of International Traffic
3.4.2c	Cargo Traffic – North America	4.4.6a	Passengers per Unit of Soft Cost Input vs. Airport Size
3.4.3a	Work Load Units (WLU) – Asia Pacific	4.4.6b	Soft Cost Input Productivity vs. Airport Size
3.4.3b	Work Load Units (WLU) – Europe	4.4.7a	Passengers per Unit of Soft Cost Input vs. Share of International Traffic
3.4.3c	Work Load Units (WLU) – North America	4.4.7b	Soft Cost Input Productivity vs. Share of International Traffic
3.4.4a	Aircraft Movement – Asia Pacific	4.4.8a	Variable Factor Productivity vs. Airport Size
3.4.4b	Aircraft Movement – Europe	4.4.8b	Variable Factor Productivity vs. Share of International Traffic
3.4.4c	Aircraft Movement – North America	4.4.8c	Variable Factor Productivity vs. Share of Cargo Traffic
3.4.5a	Passengers per Aircraft Movement – Asia Pacific	4.4.8d	Variable Factor Productivity vs. Share of Non-Aeronautical Revenue
3.4.5b	Passengers per Aircraft Movement – Europe	4.5.2a1	Residual Variable Factor Productivity – Asia
3.4.5c	Passengers per Aircraft Movement – North America	4.5.2a2	Residual Variable Factor Productivity – Oceania
3.5a	Share of Flights by Dominant Carrier – Asia Pacific	4.5.2b1	Residual Variable Factor Productivity – Europe (Large Airports)
3.5b	Share of Flights by Dominant Carrier – Europe	4.5.2b2	Residual Variable Factor Productivity – Europe (Small & Medium Airports)
3.5c	Share of Flights by Dominant Carrier – North America	4.5.2c1	Residual Variable Factor Productivity – North America (Large Airports)
		4.5.2c2	Residual Variable Factor Productivity – North America (Small & Medium Airports)
4.2.1.1a	Passengers per Employee – Asia Pacific	4A-1a	Residual VFP vs. Cost Frontier Efficiency Index 1
4.2.1.1b	Passengers per Employee – Europe	4A-1b	Residual VFP vs. Cost Frontier Efficiency Index 2
4.2.1.1c	Passengers per Employee – North America		
4.2.1.2a	Aircraft Movements per Employee – Asia Pacific	5.1.1a	Labour Cost Share – Asia Pacific
4.2.1.2b	Aircraft Movements per Employee – Europe	5.1.1b	Labour Cost Share – Europe
4.2.1.2c	Aircraft Movements per Employee – North America	5.1.1c	Labour Cost Share – North America
4.2.1.3a	Work Load Units (WLU) per Employee – Asia Pacific	5.2.1a	Labour Cost per Passenger – Asia Pacific
4.2.1.3b	Work Load Units (WLU) per Employee – Europe	5.2.1b	Labour Cost per Passenger – Europe
4.2.1.3c	Work Load Units (WLU) per Employee – North America	5.2.1c	Labour Cost per Passenger – North America
4.2.1.4a	Overall Labor Productivity – Asia Pacific	5.2.2a	Labour Cost per Aircraft Movement – Asia Pacific
4.2.1.4b	Overall Labor Productivity – Europe	5.2.2b	Labour Cost per Aircraft Movement – Europe
4.2.1.4c	Overall Labor Productivity – North America	5.2.2c	Labour Cost per Aircraft Movement – North America
4.2.2.1a	Passengers per Gate – Asia Pacific	5.2.3a	Labour Cost per Work Load Unit – Asia Pacific
4.2.2.1b	Passengers per Gate – Europe	5.2.3b	Labour Cost per Work Load Unit – Europe
4.2.2.1c	Passengers per Gate – North America	5.2.3c	Labour Cost per Work Load Unit – North America
4.2.2.2a	Passengers per Square Meter of Terminal Area – Asia Pacific	5.2.4a	Variable Cost per Passenger – Asia Pacific
4.2.2.2b	Passengers per Square Meter of Terminal Area – Europe	5.2.4b	Variable Cost per Passenger – Europe
4.2.2.2c	Passengers per Square Meter of Terminal Area – North America	5.2.4c	Variable Cost per Passenger – North America
4.2.2.3a	Aircraft Movements per Runway – Asia Pacific	5.2.5a	Variable Cost per Aircraft Movement – Asia Pacific
4.2.2.3b	Aircraft Movements per Runway – Europe	5.2.5b	Variable Cost per Aircraft Movement – Europe
4.2.2.3c	Aircraft Movements per Runway – North America	5.2.5c	Variable Cost per Aircraft Movement – North America
4.2.3.1a	Productivity of Soft Cost Inputs with Passengers as Output – Asia Pacific	5.2.6a	Variable Cost per Work Load Unit – Asia Pacific
4.2.3.1b	Productivity of Soft Cost Inputs with Passengers as Output – Europe	5.2.6b	Variable Cost per Work Load Unit – Europe
4.2.3.1c	Productivity of Soft Cost Inputs with Passengers as Output – North America	5.2.6c	Variable Cost per Work Load Unit – North America
4.2.3.2a	Soft Cost Input Productivity – Overall Output Index – Asia Pacific	5.2.7a	Unit Variable Cost Index – Asia Pacific
4.2.3.2b	Soft Cost Input Productivity – Overall Output Index – Europe	5.2.7b	Unit Variable Cost Index – Europe
4.2.3.2c	Soft Cost Input Productivity – Overall Output Index – North America		

5.2.7c	Unit Variable Cost Index – North America	6.3.4b	Current Ratio – Europe
5.3.1.1a	Average Annual Employee Compensation – Asia Pacific	6.3.4c	Current Ratio – North America
5.3.1.1b	Average Annual Employee Compensation – Europe	6.3.5a	Return on Assets – Asia Pacific
5.3.1.1c	Average Annual Employee Compensation – North America	6.3.5b	Return on Assets – Europe
5.3.1.2a	Variable Input Price Index – Asia Pacific	6.3.5c	Return on Assets – North America
5.3.1.2b	Variable Input Price Index – Europe	6.3.6a	Return on Equity – Asia Pacific
5.3.1.2c	Variable Input Price Index – North America	6.3.6b	Return on Equity – Europe
5.3.2	Unit Variable Cost vs. Labour Price	6.3.6c	Return on Equity – United States
5.3.3	Unit Variable Cost vs. Airport Size	6.3.6d	Return on Retained Earnings – Canada
5.3.4a	Unit Variable Cost vs. Aircraft Size	6.3.7a	Debt-Assets Ratio – Asia Pacific
5.3.4b	Unit Variable Cost vs. Share of International Traffic	6.3.7b	Debt-Assets Ratio – Europe
5.3.4c	Unit Variable Cost vs. Share of Non-Aeronautical Revenue	6.3.7c	Debt-Assets Ratio – North America
5.4a1	Cost Competitiveness – Asia	6.3.8a	Debt-Equity Ratio – Asia Pacific
5.4a2	Cost Competitiveness – Oceania	6.3.8b	Debt-Equity Ratio – Europe
5.4b1	Cost Competitiveness – Europe (Large Airports)	6.3.8c	Debt-Equity Ratio – United States
5.4b2	Cost Competitiveness – Europe (Small & Medium Airports)		
5.4c1	Cost Competitiveness – North America (Large Airports)	7.2.1a	Terminal Charge per Passenger (International Flights) without Baggage and Check-in Charge – Asia Pacific
5.4c2	Cost Competitiveness – North America (Small & Medium Airports)	7.2.1b	Terminal Charge per Passenger (International Flights) without Baggage and Check-in Charge – Europe
6.1.1a	Non-Aeronautical Revenue Share – Asia Pacific	7.2.1c	Average (Terminal) Revenue per Passenger – North America
6.1.1b	Non-Aeronautical Revenue Share – Europe	7.2.2a	Terminal Charge per Passenger (International Flights) with Baggage and Check-in Charge – Asia Pacific
6.1.1c	Non-Aeronautical Revenue Share – North America	7.2.2b	Terminal Charge per Passenger (International Flights) with Baggage and Check-in Charge – Europe
6.1.3a	Concession Revenue Share – Asia Pacific	7.4	Cost per Enplaned Passenger – North America
6.1.3b	Concession Revenue Share – Europe		
6.1.3c	Concession Revenue Share – North America		
6.1.4a	Parking Revenue Share – Asia Pacific		
6.1.4b	Parking Revenue Share – Europe		
6.1.4c	Parking Revenue Share – North America		
6.2.1a	Aeronautical Revenue per Aircraft Movement – Asia Pacific		
6.2.1b	Aeronautical Revenue per Aircraft Movement – Europe		
6.2.1c	Aeronautical Revenue per Aircraft Movement – North America		
6.2.2a	Concession Revenue per Passenger – Asia Pacific		
6.2.2b	Concession Revenue per Passenger – Europe		
6.2.2c	Concession Revenue per Passenger – North America		
6.2.3a	Operating Revenue per Passenger – Asia Pacific		
6.2.3b	Operating Revenue per Passenger – Europe		
6.2.3c	Operating Revenue per Passenger – North America		
6.2.4a	Operating Revenue per Aircraft Movement – Asia Pacific		
6.2.4b	Operating Revenue per Aircraft Movement – Europe		
6.2.4c	Operating Revenue per Aircraft Movement – North America		
6.2.5a	Operating Revenue per Work Load Unit – Asia Pacific		
6.2.5b	Operating Revenue per Work Load Unit – Europe		
6.2.5c	Operating Revenue per Work Load Unit – North America		
6.2.6a	Operating Revenue per Employee – Asia Pacific		
6.2.6b	Operating Revenue per Employee – Europe		
6.2.6c	Operating Revenue per Employee – North America		
6.3.1a	Net Operating Income – Asia Pacific		
6.3.1b	Net Operating Income – Europe		
6.3.1c	Net Operating Income – North America		
6.3.2a	EBITDA – Asia Pacific		
6.3.2b	EBITDA – Europe		
6.3.2c	EBITDA – North America		
6.3.3a	Operating Margin – Asia Pacific		
6.3.3b	Operating Margin – Europe		
6.3.3c	Operating Margin – North America		
6.3.4a	Current Ratio – Asia Pacific		



Airport Benchmarking Report Order Form

ISSN 1712-1205 The report consists of 3 volumes:

- Volume I Summary Report (98 pages)
- Volume II Full Results and Analysis (355 pages)
- Volume III Airport Profiles, Methodology and Data Description (229 pages)

I. Please select the report(s) you would like to order:

- 2014 report (PDF version): **US\$950**
- 2013 report (PDF version): **US\$750**
- 2012 report (PDF version): **US\$500**
- 2011 report (PDF version): **US\$300**
- 2010 report (PDF version): **US\$300**
- 2009 report (PDF version): **US\$300**
- 2008 report (PDF version): **US\$300**
- 2007 report (PDF version): **US\$300**
- 2006 report (PDF version): **US\$300**
- 2005 report (PDF version): **US\$300**
- 2004 report (PDF version): **US\$300**

Email: _____

Commercial code (if applicable): _____

Please return to:

Air Transport Research Group
 Attn to: Prof. Tae Oum
 Chairman, ATRS

Tel: 604-822-8254
 604-266-3767

Email:
benchmarking@atrsworld.org
publication@atrsworld.org

Website: www.atrsworld.org

b) OPTIONAL: An additional US\$100 for each PRINTED copy

* Leave this section blank if only PDF versions are required

Year(s): _____

Mailing Information (Non-PO Box):

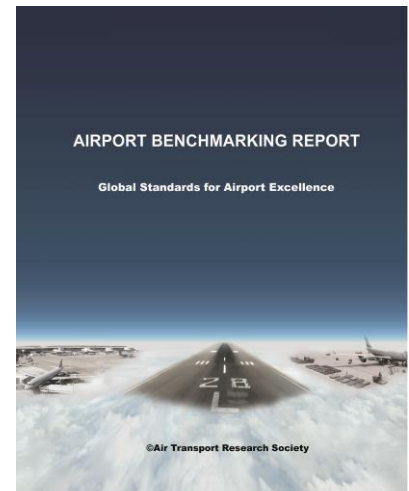
Name: _____

Company: _____

Address: _____

Postal Code: _____ Country: _____

Phone: _____ Fax: _____



II. Payment Method:

- Credit Card:
 Pay by pressing the "Buy Now" Button at the ATRS Website: <http://www.atrsworld.org/airportawards.html>
- Wire Transfer:
 Bank of Montreal, University of British Columbia Branch, Tel: 1-604-665-7076
 University Market Place, 2142 Western Parkway, Vancouver, B.C., Canada V6T 1V6
 Account: Air Transport Research Group; Branch Transit: 0811; Account 4600-667
 Swiftcode: BOFMCAM2; IBAN Code: 026227760; BIC Code: 0811 4600-667
- Cheque (make payable to Air Transport Research Group)
- Please tick if you are an individual or corporate member of ATRS