

# 2017 AIRPORT BENCHMARKING REPORT

Global Standards for Airport Excellence

## Information Package

©Air Transport Research Society

## 2017 Airport Benchmarking Team

### Project Coordinator:

Professor Tae H. OUM

Air Transport Research Society

### Research Director:

Professor Chunyan Yu

Embry-Riddle Aeronautical University

### North America:

Professor Bijan VASIGH  
(United States of America)

Embry-Riddle Aeronautical University

Professor Jia YAN  
(United States of America)

Washington State University

### Asia Pacific:

Professor Peter FORSYTH  
(Australia)

Monash University

Professor Paul Hooper  
(Australia)

University of New South Wales

Professor Japhet Law  
(Hong Kong)

Chinese University of Hong Kong

Professor Yuichiro YOSHIDA  
(Japan)

International University of Japan

Professor Yeong-Heok LEE  
(Korea)

Hankuk Aviation University

Professor Shinya HANAOKA  
(japan)

Tokyo Institute of Technology

Professor Xiaowen Fu  
(Australia)

The University of Sydney

### Europe:

Professor Jaap de WIT  
(The Netherlands)

University of Amsterdam

Professor Eric PELS  
(The Netherlands)

Free University of Amsterdam

Professor Hans-Martin  
NIEMEIER (Germany)

University of Applied Science

Professor Nicole ADLER  
(Israel)

Hebrew University of Jerusalem

### Headquarters Staff:

Volodymyr Klimchenko

Research Assistant, Air Transport Research Society

Liming Yan

Research Assistant, Air Transport Research Society

Qi (lisa) Yang

Research Assistant, Air Transport Research Society

Asia Pacific			
Code	Airport Name	City, Country	
1	ADL	Adelaide International Airport	Adelaide, Australia
2	AKL	Auckland International Airport	Auckland, New Zealand
3	BKK	Suvarnabhumi Airport	Bangkok, Thailand
4	BNE	Brisbane Airport	Brisbane, Australia
5	BOM	Chhatrapati Shivaji International Airport	Mumbai, India
6	CAN	Bai Yun Airport	Guangzhou, China
7	CEI	Mae Fah Luang-Chiang Rai International Airport	Chiang Rai, Thailand
8	CGK	Jakarta Soekarno-Hatta International Airport	Jakarta, Indonesia
9	CJU	Jeju International Airport	Jeju, Korea
10	CHC	Christchurch International Airport	Christchurch, New Zealand
11	CMB	Bandaranaike International Airport	Colombo, Sri Lanka
12	CNS	Cairns International Airport	Cairns, Australia
13	CNX	Chiang Mai International Airport	Chiang Mai, Thailand
14	DEL	Indira Gandhi International Airport	New Delhi, India
15	DRW	Darwin International Airport	Darwin, Australia
16	DUD	Dunedin International Airport	Dunedin, New Zealand
17	DXB	Dubai International Airport	Dubai, UAE
18	GMP	Seoul Gimpo International Airport	Seoul, South Korea
19	GUM	Antonio B. Won Pat International Airport	Hagatna, Guam
20	HAK	Meilan International Airport	Haikou, China
21	HDY	Hat Yai International Airport	Hat Yai, Thailand
22	HKG	Hong Kong International Airport	Hong Kong, China
23	HKT	Phuket International Airport	Phuket, Thailand
24	HND	Haneda Airport	Tokyo, Japan
25	ICN	Incheon International Airport	Incheon, Korea
26	KIX	Kansai International Airport	Osaka, Japan
27	KUL	Kuala Lumpur International Airport	Kuala Lumpur, Malaysia
28	MAA	Chennai International Airport	Chennai, India
29	MEL	Melbourne Airport	Melbourne, Australia
30	MFM	Macau International Airport	Macau, China
31	MNL	Ninoy Aquino International Airport	Manila, The Philippines
32	NAN	Nadi International Airport	Nadi, Fiji
33	NGO	Central Japan International Airport	Nagoya, Japan
34	NRT	Tokyo Narita International Airport	Tokyo, Japan
35	NTL	Newcastle Airport	Newcastle, Australia
36	OOL	Gold Coast Airport	Gold Coast, Australia
37	PEK	Beijing Capital International Airport	Beijing, China
38	PEN	Penang International Airport	Penang, Malaysia
39	PER	Perth International Airport	Perth, Australia
40	PNH	Phnom Penh International Airport	Phnom Penh, Cambodia
41	PUS	Gimhae International Airport	Busan, Korea
42	PVG	Shanghai Pudong International Airport	Shanghai, China
43	REP	Siem Reap International Airport	Siem Reap, Cambodia
44	SHA	Shanghai Hongqiao International Airport	Shanghai, China
45	SIN	Singapore Changi International Airport	Singapore, Singapore
46	SUB	Juanda International Airport	Sidoarjo, Indonesia
47	SYD	Sydney Airport	Sydney, Australia
48	SZX	Shenzhen Bao'an International Airport	Shenzhen, China
49	TPE	Taiwan Taoyuan International Airport	Taipei, Taiwan
50	TSV	Townsville Airport	Townsville, Australia
51	WLG	Wellington International Airport	Wellington, New Zealand
52	XMN	Xiamen Gaoqi International Airport	Xiamen, China
53	ZQN	Queenstown Airport	Frankton, New Zealand

Europe			
Airport Code	Airport Name	City, Country	
54	AGP	Malaga-Costa del Sol Airport	Malaga, Spain
55	ALC	Alicante Airport	El Altet - Torrellano, Spain
56	AMS	Amsterdam Airport Schiphol	Amsterdam, The Netherlands
57	ARN	Stockholm-Arlanda Airport	Stockholm, Sweden
58	ATH	Athens International Airport	Athens, Greece
59	BCN	Barcelona El Prat Airport	Barcelona, Spain
60	BEG	Belgrade Nikola Tesla Airport	Belgrade, Serbia
61	BGY	Bergamo-Orio al Serio Airport	Bergamo, Italy
62	BHX	Birmingham Airport	Birmingham, England
63	BLQ	Bologna Airport	Bologna, Italy
64	BRS	Bristol Airport	Lulsgate Bottom, England
65	BRU	Brussels Airport	Brussels, Belgium
66	BSL	EuroAirport Basel-Mulhouse-Freiburg	Basel, Switzerland
67	BTS	Bratislava Milan Rastislav Stefanik Airport	Bratislava, Slovakia
68	BUD	Budapest Ferenc Liszt International Airport	Budapest, Hungary
69	CDG	Paris Charles de Gaulle Airport	Paris, France
70	CGN	Cologne/Bonn Konrad Adenauer Airport	Cologne, Germany
71	CIA	Rome Ciampino Airport	Rome, Italy
72	CPH	Copenhagen Airport Kastrup	Copenhagen, Denmark
73	DUB	Dublin Airport	Dublin, Ireland
74	DUS	Düsseldorf International Airport	Düsseldorf, Germany
75	EDI	Edinburgh Airport	Edinburgh, Scotland
76	FCO	Rome Leonardo Da Vinci/Fiumicino Airport	Rome, Italy
77	FRA	Frankfurt Airport	Frankfurt, Germany
78	GLA	Glasgow Airport	Renfrewshire, Scotland
79	GVA	Genève Aéroport	Geneva, Switzerland
80	HAJ	Hannover Airport	Langenhagen, Germany
81	HAM	Hamburg Airport	Hamburg, Germany
82	HEL	Helsinki Vantaa Airport	Helsinki, Finland
83	IST	Istanbul Atatürk Airport	Istanbul, Turkey
84	KBP	Kiev Boryspil International Airport	Kiev, Ukraine
85	KEF	Keflavik International Airport	Reykjanesbaer, Iceland
86	LED	Pulkovo Airport	Saint Petersburg, Russia
87	LGW	London Gatwick International Airport	London, England
88	LHR	London Heathrow Airport	London, England
89	LIN	Milan Linate Airport	Milan, Italy
90	LIS	Lisbon Portela Airport	Lisbon, Portugal
91	LJU	Ljubljana Jože Pučnik Airport	Ljubljana, Slovenia
92	LPA	Gran Canaria Airport	Teldi, Spain
93	LTN	London Luton Airport	London, England
94	LUX	Luxembourg Airport	Findel, Luxembourg
95	LYS	Lyon-Saint Exupery Airport	Colombier-Saugnieu, France
96	MAD	Madrid Barajas Airport	Madrid, Spain
97	MAN	Manchester Airport	Manchester, England
98	MLA	Malta International Airport	Valletta, Malta
99	MUC	Munich Airport	Munich, Germany
100	MPX	Milan Malpensa Airport	Milan, Italy
101	NAP	Naples International Airport	Naples, Italy
102	NCE	Nice Cote D'Azur Airport	Nice, France
103	OPO	Porto Airport	Porto, Portugal



# Airports included in the ATRS Airport Benchmarking Report (Cont.)

Europe		
Airport Code	Airport Name	City, Country
104	ORY	Paris Orly Airport Paris, France
105	OSL	Oslo Airport Gardermoen Oslo, Norway
106	PMI	Palma de Mallorca Airport Palma de Mallorca, Spain
107	PRG	Prague International Airport Prague, Czech Republic
108	RIX	Riga International Airport Riga, Latvia
109	SAW	Istanbul Sabiha Gökçen International Airport Istanbul, Turkey
110	SOF	Sofia Airport Sofia, Bulgaria
111	STN	London Stansted Airport London, England
112	STR	Stuttgart Airport Stuttgart, Germany
113	SVO	Sheremetyevo International Airport Moscow, Russia
114	SXF	Berlin Schönefeld Airport Berlin, Germany
115	SZG	Salzburg W.A. Mozart Airport Salzburg, Austria
116	TLL	Lennart Meri Tallinn Airport Tallinn, Estonia
117	TLV	Ben Gurion International Airport Tel Aviv, Israel
118	TRN	Turin Caselle Airport Turin, Italy
119	TXL	Berlin Tegel Airport Berlin, Germany
120	VCE	Venice Marco Polo Airport Venice, Italy
121	VI	Vienna International Airport Vienna, Austria
122	WAW	Warsaw Chopin Airport Warsaw, Poland
123	ZAG	Zagreb Airport Zagreb, Croatia
124	ZRH	Zurich Airport Zurich, Switzerland

North America - United States		
Code	Airport Name	City, State
124	ABQ	Albuquerque International Sunport Albuquerque, New Mexico
125	ALB	Albany International Airport Albany, New York
126	ANC	Ted Stevens Anchorage International Airport Anchorage, Alaska
127	ATL	Hartsfield-Jackson Atlanta International Airport Atlanta, Georgia
128	AUS	Austin Bergstrom Airport Austin, Texas
129	BDL	Bradley International Airport Windsor Locks, Connecticut
130	BNA	Nashville International Airport Nashville, Tennessee
131	BOS	Boston Logan International Airport Boston, Massachusetts
132	BUF	Buffalo Niagara International Airport Cheektowaga, New York
133	BUR	Bob Hope Airport Burbank, California
134	BWI	Baltimore Washington International Airport Baltimore, Maryland
135	CLE	Cleveland-Hopkins International Airport Cleveland, Ohio
136	CLT	Charlotte Douglas International Airport Charlotte, North Carolina
137	CMH	Port Columbus International Airport Columbus, Ohio
138	CVG	Cincinnati/Northern Kentucky International Airport Cincinnati, Ohio
139	DAL	Dallas Love Field Airport Dallas, Texas
140	DCA	Ronald Reagan Washington National Airport Washington, DC
141	DEN	Denver International Airport Denver, Colorado
142	DFW	Dallas Forth Worth International Airport Dallas, Texas
143	DTW	Detroit Metropolitan Wayne County Airport Detroit, Michigan
144	EWR	Newark Liberty International Airport Newark, New Jersey
145	FLL	Fort Lauderdale Hollywood International Airport Ft. Lauderdale, Florida
146	HNL	Honolulu International Airport Honolulu, Hawaii
147	HOU	William P. Hobby Airport Houston, Texas
148	IAD	Washington Dulles International Airport Washington, DC
149	IAH	George Bush Intercontinental Airport Houston, Texas
150	IND	Indianapolis International Airport Indianapolis, Indiana

North America - United States		
Code	Airport Name	City, State
151	JAX	Jacksonville International Airport Jacksonville, Florida
152	JFK	New York-John F. Kennedy International Airport New York, New York
153	LAS	Las Vegas McCarran International Airport Las Vegas, Nevada
154	LAX	Los Angeles International Airport Los Angeles, California
155	LGA	LaGuardia International Airport New York, New York
156	MCI	Kansas City International Airport Kansas City, Missouri
157	MCO	Orlando International Airport Orlando, Florida
158	MDW	Chicago Midway Airport Chicago, Illinois
159	MEM	Memphis International Airport Memphis, Tennessee
160	MIA	Miami International Airport Miami, Florida
161	MKE	General Mitchell International Airport Milwaukee, Wisconsin
162	MSP	Minneapolis/St. Paul International Airport Minneapolis, Minnesota
163	MSY	Louis Armstrong New Orleans International Airport New Orleans, Louisiana
164	OAK	Oakland International Airport Oakland, California
165	OGG	Kahului Airport Kahului, Hawaii
166	OKC	Will Rogers World Airport Oklahoma City, Oklahoma
167	OMA	Epley Airfield Omaha, Nebraska
168	ONT	LA/Ontario International Airport Ontario, California
169	ORD	Chicago O'Hare International Airport Chicago, Illinois
170	PBI	Palm Beach International Airport West Palm Beach, Florida
171	PDX	Portland International Airport Portland, Oregon
172	PHL	Philadelphia International Airport Philadelphia, Pennsylvania
173	PHX	Phoenix Sky Harbor International Airport Phoenix, Arizona

North America - United States		
Code	Airport Name	City, State
174	PIT	Pittsburgh International Airport Pittsburgh, Pennsylvania
175	PVD	Theodore Francis Green State Airport Warwick, Rhode Island
176	RDU	Raleigh-Durham International Airport Raleigh, North Carolina
177	RIC	Richmond International Airport Richmond, Virginia
178	RNO	Reno/Tahoe International Airport Reno, Nevada
179	RSW	Southwest Florida International Airport South Fort Myers, Florida
180	SAN	San Diego International Airport San Diego, California
181	SAT	San Antonio International Airport San Antonio, Texas
182	SDF	Louisville International-Standiford Field Louisville, Kentucky
183	SEA	Seattle-Tacoma International Airport Seattle, Washington
184	SFO	San Francisco International Airport San Francisco, California
185	SJC	Norman Y. Mineta San José International Airport San José, California
186	SJU	Luis Muñoz Marín International Airport San Juan, Puerto Rico
187	SLC	Salt Lake City International Airport Salt Lake City, Utah
188	SMF	Sacramento International Airport Sacramento, California
189	SNA	John Wayne Orange County Airport Costa Mesa, California
190	STL	St. Louis-Lambert International Airport St. Louis, Missouri
191	TPA	Tampa International Airport Tampa, Florida
192	TUL	Tulsa International Airport Tulsa, Oklahoma
193	TUS	Tucson International Airport Tucson, Arizona

North America - Canada		
Code	Airport Name	City, Province
194	YEG	Edmonton International Airport Edmonton, Alberta
195	YHZ	Halifax Stanfield International Airport Halifax, Nova Scotia
196	YOW	Ottawa Macdonald-Cartier International Airport Ottawa, Ontario
197	YQB	Québec City Jean Lesage International Airport Québec City, Québec
198	YQR	Regina International Airport Regina, Saskatchewan
199	YUL	Montréal-Pierre Elliott Trudeau International Airport Montréal, Québec
200	YVR	Vancouver International Airport Vancouver, British Columbia
201	YWG	Winnipeg James Armstrong Richardson International Airport Winnipeg, Manitoba
202	YYC	Calgary International Airport Calgary, Alberta
203	YYJ	Victoria International Airport Victoria, British Columbia
204	YYT	St. John's International Airport St. John's, Newfoundland
205	YYZ	Toronto Lester B. Pearson International Airport Toronto, Ontario

## Asia Pacific - Major Airport Authorities

	Code	Authority Name	Country
G1	AAI	Airports Authority of India	India
G2	ADG	Airport Development Group	Australia
G3	AOT	Airports of Thailand Public Company Limited	Thailand
G4	APAC	Australia Pacific Airports Corporation	Australia
G5	API	P.T. (Persero) Angkasa Pura I	Indonesia
G6	APII	P.T. (Persero) Angkasa Pura II	Indonesia
G7	KAC	Korea Airports Corporation	Korea
G8	MAHB	Malaysia Airports Holding Behard	Malaysia
G9	QAL	Queensland Airport Limited	Australia

## Europe - Major Airport Authorities

	Airport Code	Authority Name	Country
G10	ADP	Aeroports de Paris	France
G11	ADR	Aeroporti di Roma	Italy
G12	AENA	Aeropuertos Espanoles y Navegacion Aerea	Spain
G13	ANA	Aeropostos de Portugal	Portugal
G14	Avinor	Avinor Group	Norway
G15	Berlin	Berlin Airports	Germany
G16	DAA	Dublin Airport Authority	Ireland
G17	Finavia	Finavia Oyj	Finland
G18	Fraport	Fraport AG	Germany
G19	Isavia	Isavia	Iceland
G20	MAG	Manchester Airports Group	United Kingdom
G21	Schiphol	Schiphol Group	The Netherlands
G22	SEA	Società Enti Aeroportuali (SEA) Aeroporti di Milano	Italy
G23	Swedavia	Swedavia	Sweden
G24	TAV	TAV Airports Holding	Turkey

## The ATRS Benchmarking Report consists of three parts:

- **Part I** provides a summary of the research approach and key results. It contains 9 summary tables and 10 summary charts covering the main aspects of airport operations and management, including labour productivity, soft cost input productivity, residual variable factor productivity, and revenue generation.
  
- **Part II** is the main body of the report. It provides over 200 charts and tables comparing most dimensions of airport performance across airports. It also provides comparisons of the status of the airports in terms of traffic volume, number of employees and terminal-airside capacity. A comparison of airport charges including landing and passenger charges is also presented.
  
- **Part III** of the report presents a short description of each airport including a section on new development and on recent awards. It also includes information on capacity and traffic (with time series data), airport charges as well as highlights of the current revenue, and profit margin. In addition, a summary of the airport charges is also included.
  
- This report includes:
  - 206 airports**
  - 24 airports groups/authorities**

## THE REPORT

The main objective of this report is to measure and compare the performance of several important aspects of airport operation including:

- **Productivity and Efficiency**
- **Unit Costs and Unit Competitiveness**
- **Financial Results**
- **Airport Charges**

The report also examines the relationship between various performance measures and airport characteristics in order to better explain the differences in airport performance.

## PRODUCTIVITY AND EFFICIENCY

The report measures and compares a number of partial measures of productivity including labour productivity, capital productivity, and “soft cost input” productivity. These include the typical partial performers such as passengers per employee, passengers per gate etc.

In addition, this report introduces a number of new partial productivity measures including the “soft cost input” productivity. “Soft cost input” productivity, a measure unique to the ATRS Benchmarking Report, is a catch-all input which includes all expenses other than labour and capital and is used primarily to take into account the cost of buying in outsourced services.

The soft cost input account for 28% to 93% of an airports non-capital expenditures, as such, it is extremely important to consider this soft cost in examining airport performance.

## UNIT COST AND UNIT COMPETITIVENESS

The report presents a number of unit cost measures. These include measures such as labour cost per passenger, labour cost per aircraft movement, etc. A unit cost index provides a means by which to examine the relationship to various airport characteristics and airport service levels.

## FINANCIAL RESULTS

The report presents a number of revenue generation indicators and common financial ratios, including aeronautical revenue per aircraft movement, total revenue per passenger, return on equity, current ratio, return on asset, etc. A yield for total revenue per unit of output is also provided as an overall revenue generation indicator.

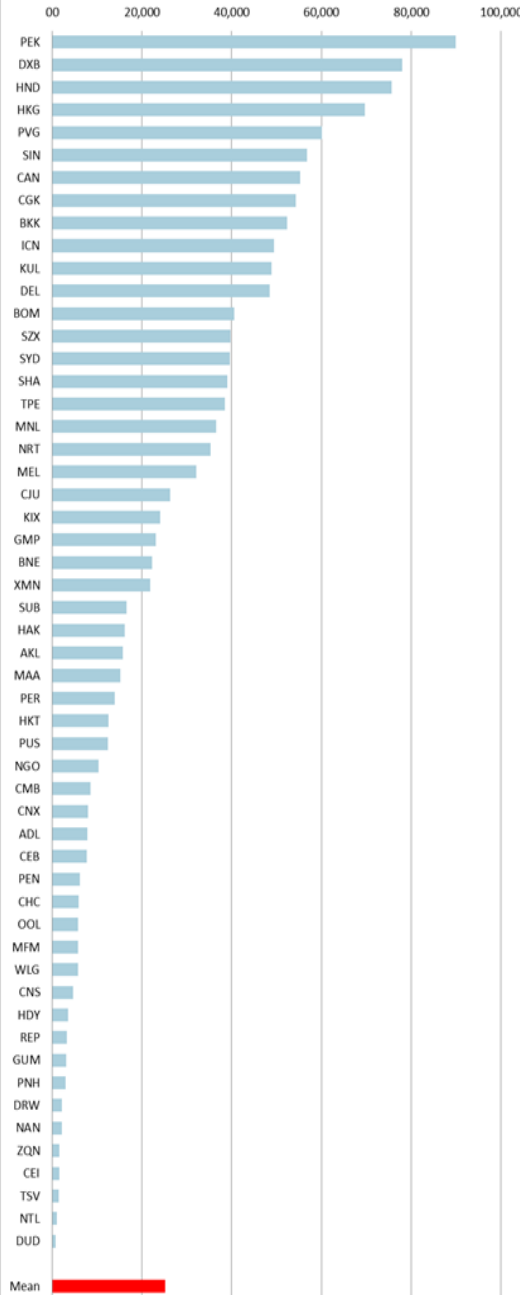
## AIRPORT CHARGES

One means for airports to derive revenues is through charges associated with aeronautical activities. Aeronautical charges are levied for the use of an airport’s runway, apron and terminal facilities. Landing charges, typically based on the weight of the aircraft, terminal (Passenger) charges, generally levied on the number of passengers at time of departure, and aeronautical fee as a whole are compared in the report. Three types of aircraft reflecting different aircraft weight classes are considered: **Boeing 777-300ER, Boeing 767-400, Boeing 737-800, Airbus 321, and CRJ 200**. A breakdown of landing charges by weight categories and passenger charges by boarding passenger is also included.



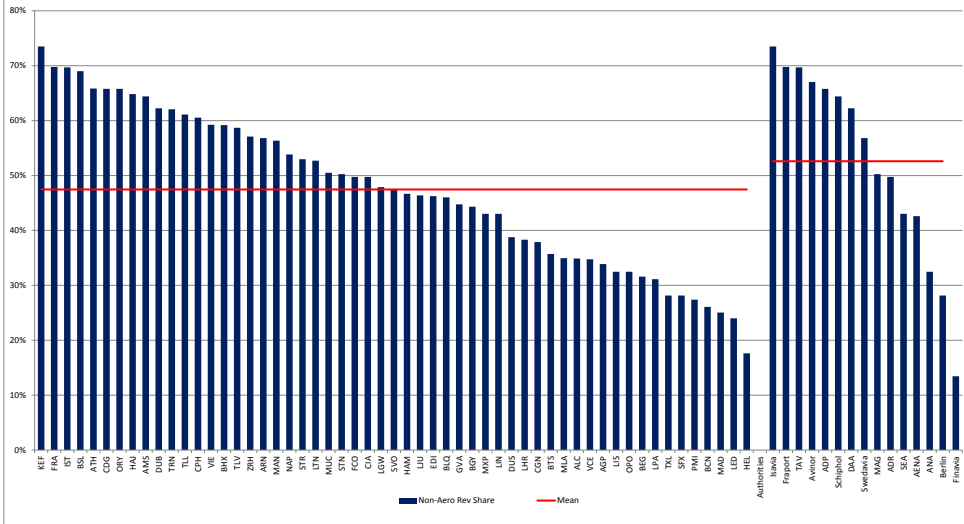
# Samples

Figure 3.4.1a: Passenger Traffic (2015)  
- Asia Pacific



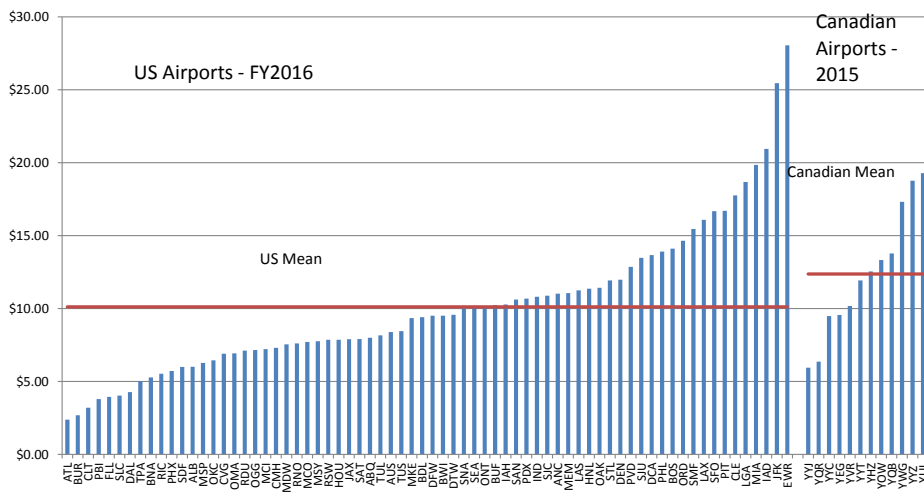
Airport Code	2011	2012	2013	2014	2015	%Change 14-15	%Change 11-15
PEK	78,675	81,929	83,712	86,128	89,939	4.42%	14.32%
DXB	50,980	57,700	66,497	70,476	78,015	10.70%	53.03%
HND	63,709	66,795	68,907	72,827	75,573	3.77%	18.62%
HKG	53,904	57,200	59,588	64,700	69,700	7.73%	29.30%
PVG	41,448	44,880	47,190	51,688	60,098	16.27%	45.00%
SIN	47,951	51,941	53,873	54,093	56,737	4.89%	18.32%
CAN	45,040	48,309	52,450	54,780	55,202	0.77%	22.56%
CGK	48,948	57,773	60,137	57,221	54,291	-5.12%	10.92%
BKK	47,801	52,369	50,901	46,497	52,384	12.66%	9.59%
ICN	35,158	38,971	41,483	45,512	49,413	8.57%	40.55%
KUL	37,705	39,888	47,498	48,930	48,938	0.02%	29.79%
DEL	35,882	34,368	36,877	40,986	48,424	18.15%	34.95%
BOM	30,748	30,208	32,221	34,994	40,637	16.13%	32.16%
SZX	28,246	29,570	32,268	36,273	39,722	9.51%	40.63%
SYD	35,631	35,987	37,863	38,500	39,656	3.00%	11.30%
SHA	33,112	33,829	35,600	37,971	39,091	2.95%	18.06%
TPE	24,948	27,837	30,702	34,141	38,473	12.69%	54.22%
MNL	29,552	32,100	32,857	34,094	36,583	7.30%	23.79%
NRT	28,028	32,865	35,315	35,595	35,356	-0.67%	26.14%
MEL	27,963	28,918	29,492	31,936	32,104	0.53%	14.81%
CJU	14,202	18,443	20,055	23,198	26,238	13.11%	84.75%
KIX	13,857	16,799	18,126	20,049	24,060	20.01%	73.63%
GMP	18,514	19,429	19,904	21,567	23,164	7.40%	25.12%
BNE	20,249	21,182	21,391	21,845	22,275	1.97%	10.01%
XMN	15,757	17,354	19,753	20,864	21,814	4.55%	38.44%
SUB	13,778	15,259	17,684	17,479	16,640	-4.80%	20.77%
HAK	10,168	10,697	11,936	13,854	16,167	16.70%	59.01%
AKL	13,824	14,006	14,842	15,062	15,817	5.01%	14.41%
MAA	12,925	12,777	12,896	14,299	15,218	6.43%	17.74%
PER	11,451	12,633	13,810	14,000	13,984	-0.11%	22.12%
HKT	8,206	9,161	10,980	11,276	12,538	11.19%	52.78%
PUS	8,749	9,196	9,671	10,379	12,383	19.31%	41.53%
NGO	8,891	9,211	9,702	9,885	10,420	5.41%	17.20%
CMB	6,146	7,080	7,312	7,781	8,508	9.35%	38.45%
CNX	3,680	4,335	5,173	6,213	8,070	29.88%	119.27%
ADL	7,397	7,099	7,377	7,853	7,842	-0.14%	6.02%
CEB	6,216	6,771	6,996	6,840	7,781	13.76%	25.18%
PEN	4,600	4,768	5,488	6,042	6,259	3.59%	36.05%
CHC	5,776	5,552	5,584	5,690	5,916	3.97%	2.43%
OOL	5,486	5,327	5,805	5,784	5,865	1.41%	6.92%
MFM	4,045	4,366	5,027	5,481	5,831	6.39%	44.16%
WLG	5,192	5,374	5,437	5,457	5,796	6.21%	11.63%
CNS	3,859	3,943	4,442	4,556	4,658	2.23%	20.69%
HDY	1,835	2,013	2,465	2,944	3,568	21.19%	94.49%
REP	1,826	2,223	2,663	3,019	3,297	9.20%	80.52%
GUM	2,842	3,142	3,380	3,184	3,185	0.04%	12.09%
PNH	1,840	2,077	2,394	2,666	3,079	15.50%	67.35%
DRW	2,287	2,045	2,202	2,302	2,218	-3.65%	-3.02%
NAN	2,231	1,857	1,982	2,027	2,211	9.08%	-0.90%
ZQN	924	1,047	1,249	1,399	1,651	18.05%	78.64%
CEI	805	926	1,054	1,292	1,640	26.99%	103.76%
TSV	1,672	1,696	1,645	1,595	1,551	-2.78%	-7.29%
NTL	1,211	1,184	1,178	1,190	1,144	-3.84%	-5.56%
DUD	777	854	860	853	862	1.04%	11.01%
Mean	19,753	21,171	22,517	23,616	25,222	6.80%	27.69%
AA	162,303	159,298	169,027	190,100	223,616	17.63%	37.78%
APJ	72,309	82,013	86,342	85,131	84,292	-0.99%	16.57%
AOT	66,301	71,521	86,135	87,572	106,790	21.94%	61.07%
MAHB	64,010	67,196	79,587	83,348	83,830	0.58%	30.96%
KAC	50,328	52,873	55,157	61,628	69,366	12.56%	37.83%
APAC	28,000	29,130	31,220	32,080	32,200	0.37%	15.00%
QAL	7,334	7,227	7,755	7,577	7,662	1.12%	4.47%
Mean	64,369	67,037	73,603	78,205	86,822	11.02%	34.88%

Figure 6.1.1b: Non-Aeronautical Revenue Share (2015) - Europe



# Airport Charges – Cost per enplaned passenger

Figure S-10c Cost per Enplaned Passenger (2015-2016), North America



<b>Sheremetyevo International Airport</b>		<b>SVO</b>																						
<b>Moscow, Russia</b>		<b>Fiscal Year-End: Dec. 31, 2015</b>																						
Website: <a href="http://www.svo.aero">www.svo.aero</a>																								
<b>Ownership &amp; Management</b>																								
Sheremetyevo International Airport is operated by Moscow Sheremetyevo International Airport (MASH) (State). The shareholders are the Russian Federation (83% of registered capital), JSC AEROFLOT Russian Airlines (9%), LTD VEB Capital Investing Company (4.24%), VTB Bank (JSC) (8.76%).																								
		<table border="1"> <tr><th colspan="2">Capacity</th></tr> <tr><td>Runways</td><td>2</td></tr> <tr><td>Terminal Size (m<sup>2</sup>)</td><td>-</td></tr> <tr><td>Gates</td><td>58</td></tr> <tr><td>Employees</td><td>-</td></tr> </table>	Capacity		Runways	2	Terminal Size (m <sup>2</sup> )	-	Gates	58	Employees	-												
Capacity																								
Runways	2																							
Terminal Size (m <sup>2</sup> )	-																							
Gates	58																							
Employees	-																							
		<table border="1"> <tr><th colspan="2">Traffic</th></tr> <tr><td>% International FAX</td><td>56.8%</td></tr> <tr><td>Dominant Carrier</td><td>Aeroflot</td></tr> <tr><td>% of Dominant Carrier</td><td>89.7%</td></tr> <tr><td>Movements per Day</td><td>726</td></tr> <tr><td>Daily Gate Utilization (FAX)</td><td>1498</td></tr> </table>	Traffic		% International FAX	56.8%	Dominant Carrier	Aeroflot	% of Dominant Carrier	89.7%	Movements per Day	726	Daily Gate Utilization (FAX)	1498										
Traffic																								
% International FAX	56.8%																							
Dominant Carrier	Aeroflot																							
% of Dominant Carrier	89.7%																							
Movements per Day	726																							
Daily Gate Utilization (FAX)	1498																							
		<table border="1"> <tr><th colspan="2">Airport Charges</th></tr> <tr><td colspan="2"><b>Landing charge (RUB)</b></td></tr> <tr><td colspan="2">178.3 per tonne</td></tr> <tr><td colspan="2"><b>Parking charge (RUB)</b></td></tr> <tr><td colspan="2">5% of landing fee per hour</td></tr> <tr><td colspan="2"><b>Passenger charge (RUB)</b></td></tr> <tr><td colspan="2">Domestic passenger - 112.9/pax</td></tr> <tr><td colspan="2">Terminal C - 86.3/pax</td></tr> <tr><td colspan="2">Terminal D - 350/pax</td></tr> <tr><td colspan="2">Terminal E - 86.3/pax</td></tr> <tr><td colspan="2">Terminal F - 86.3/pax</td></tr> </table>	Airport Charges		<b>Landing charge (RUB)</b>		178.3 per tonne		<b>Parking charge (RUB)</b>		5% of landing fee per hour		<b>Passenger charge (RUB)</b>		Domestic passenger - 112.9/pax		Terminal C - 86.3/pax		Terminal D - 350/pax		Terminal E - 86.3/pax		Terminal F - 86.3/pax	
Airport Charges																								
<b>Landing charge (RUB)</b>																								
178.3 per tonne																								
<b>Parking charge (RUB)</b>																								
5% of landing fee per hour																								
<b>Passenger charge (RUB)</b>																								
Domestic passenger - 112.9/pax																								
Terminal C - 86.3/pax																								
Terminal D - 350/pax																								
Terminal E - 86.3/pax																								
Terminal F - 86.3/pax																								
<p><b>Notes and Observations</b></p> <ul style="list-style-type: none"> <li>The objective is to merge Sheremetyevo with Vnukovo airports and partially privatize them (along with Aeroflot)</li> <li>Moscow Sheremetyevo Airport expects the launch of a railway service to connect the south and north terminals from Dec-2017, according to airport first deputy director general Andrey Nikulin (rg.ru, 27-Apr-2017). The airport plans to open terminal B, tunnels connecting terminals, a new cargo complex, the third refuelling complex and the third runway in 2018</li> <li>Glyukoskopsartian approved (13-Apr-2017) the project for installation of Lira-A10 10-centimetre wavelength terminal area radar complex at Moscow Sheremetyevo Airport.</li> </ul>																								

- Part I. Summary Report
  - Background and Objectives
  - Summary of Results
    - Results on the Productivity Measurement and Analysis
  - Partial Productivity Measures
    - Labour Productivity
    - Soft Cost Input Productivity
    - Capital Productivity
      - Variable Factor Productivity
    - Gross Variable Factor Productivity
    - Residual Variable Factor Productivity
      - Unit Variable Cost and Cost Competitiveness
    - Airport Cost Structure
      - Unit Variable Cost
      - Cost Competitiveness
        - Airport Financial Performance
      - Revenue Share
      - Revenue generation
      - Financial Profitability
        - Airport Rate and Charges
    - Summary Tables
      - Summary Tables of Productivity and Efficiency
      - Summary Tables of Airport Cost Performance
      - Summary Tables of Airport Revenue
      - Summary Figures
  - Part II. Analysis and Full Results
    - Introduction
      - Objectives
      - Approach and Scope
    - Sample Airports
      - Airport Capacities and Traffic Volume
        - Airside Capacity
        - Terminal-Side Capacity
        - Number of Gates
        - Terminal Size
        - Number of Employees
        - Traffic Volume
        - Passenger Traffic
        - Cargo Traffic
        - Work Load Unit (WLU)
        - Aircraft Movements
        - Passengers per Aircraft Movement
        - Market Share of Dominant Hub Carrier
      - Airport Productivity and Efficiency Performance
        - Outputs and Inputs
        - Partial Productivity Measures
          - Labor Productivity
            - Number of Passengers per Employee
            - Aircraft Movements per Employee
            - Work Load Units (WLU) per Employee

- Overall Labor Productivity
- Capital Productivity
- Passengers per Gate
- Passengers per Square Meter of Terminal Space
- Aircraft Movement per Runway
- Productivity of Soft Cost Input
- Soft Cost Input Productivity with Passengers as Output
- Soft Cost Input Productivity-Overall Output Index
- Variable Factor Productivity
- Factors Affecting Productivity
- Labour Productivity and Airport Size
- Labour Productivity vs. International Traffic
- Labour Productivity vs. Cargo Traffic
- Capital Productivity vs. Airport Size
- Capital Productivity vs. International Traffic
- Soft Cost Input Productivity vs. Airport Size
- Soft Cost Input Productivity vs. Share of International Traffic
- Variable Factor Productivity vs. Airport Characteristics
- Variable Factor Productivity Decomposition and Productive Efficiency
- VFP Regression
- Residual Variable Factor Productivity

- Airport Cost Performance
- Airport Cost Structure
- Labour Cost Share
- Soft Cost Shares
- Unit Cost
  - Labour Cost per Passenger
  - Labour Cost per Aircraft Movement
  - Labour Cost per Work Load Unit
  - Variable Cost per Passenger
  - Variable Cost per Aircraft Movement
  - Variable Cost per Work Load Unit
  - Unit Variable Cost Index
- Factors Affecting Unit Costs
- Input Prices
  - Average Annual Employee Compensation
  - Variable Input Price Index
  - Unit Variable Cost vs. Labour Price
  - Unit Variable Cost vs. Airport Size
  - Unit Variable Cost vs. Airport Characteristics
- 5.4 Cost Competitiveness

- Airport Financial Performance
- Revenue Shares
  - Non-Aeronautical Revenue Share
  - Aeronautical Revenue Share
  - Concession Revenue Share
  - Parking Revenue Share



Operating Revenue per Aircraft Movement  
 Operating Revenue per Work Load Unit  
 Operating Revenue per Employee  
 Financial Profitability  
 Net Operating Income  
 EBITDA  
 Operating Margin  
 Current Ratio  
 Return on Asset  
 Return on Equity  
 Debt-Asset Ratio  
 Debt-Equity Ratio

Airport Rates and Charges  
 Landing Charges  
 Terminal (Passenger) Charges  
 Combined Landing and Passenger Charges  
 Combined Landing and Passenger Charges without Baggage and Check-in Charges  
 Combined Landing and Passenger Charges with Baggage and Check-in Charges  
 Cost per Enplaned Passenger  
 Air Travel Security Charges  
 Other Airport Charges

Part III. Airport Profiles, Methodologies and Data Description  
 Appendix I Airport Profiles  
 Asia Pacific Airports  
 European Airports  
 North American Airports

Appendix II Methodology: Computation of Total Factor Productivity  
 Appendix III Data and Data Sources

#### List of Tables

S-1 Sample Airports  
 S-2 Airport Characteristics  
 S-3 Partial Factor Productivity Measures  
 S-4 Other Partial Productivity Measures  
 S-5 Gross Variable Factor Productivity  
 S-6 Residual Variable Factor Productivity  
 S-7 Unit Variable Cost and Airport Cost Competitiveness  
 S-8 Revenue Shares  
 S-9 Revenue Generation Indicators

2-1a Sample Airports-Asia Pacific  
 2-1b Sample Airports-Europe  
 2-1c Sample Airports-North America  
 2-2a Airport Characteristics-Asia Pacific  
 2-2b Airport Characteristics-Europe  
 2-2c Airport Characteristics-North America

3.1a Length of Runways –Asia Pacific  
 3.1b Length of Runways –Europe  
 3.1c Length of Runways –North America

4.1.1a Input Measures – Asia Pacific  
 4.1.1b Input Measures – Europe  
 4.1.1c Input Measures – North America  
 4.1.2a Output Measures – Asia Pacific  
 4.1.2b Output Measures – Europe  
 4.1.2c Output Measures – North America  
 4.5.1a VFP Regression Results – Asia Pacific  
 4.5.1b VFP Regression Results – Europe  
 4.5.1c VFP Regression Results – North America  
 4A-1 Cost Frontier Function Estimation Results

7.1a Landing Charges – Asia Pacific  
 7.1b Landing Charges – Europe  
 7.1c Landing Charges – North America  
 7.2a Terminal (Passenger) Charges for International Flights– Asia Pacific  
 7.2b Terminal (Passenger) Charges for International Flights – Europe  
 7.2c Average Terminal (Passenger) Charges – North America  
 7.3a Combined Landing and Terminal Charges – Asia Pacific  
 7.3b Combined Landing and Terminal Charges - Europe  
 7.4 Cost per Enplaned Passenger-North America

#### List of Figures

S-1 Labor Productivity  
 S-2 Soft Cost Input Productivity  
 S-3 Passengers per Square Meter of Terminal Area  
 S-4 Residual Variable Factor Productivity  
 S-5 Non-Aeronautical Revenue Share  
 S-6 Revenue per Passenger  
 S-7 Revenue per Employee  
 S-8 Landing Charges for Boeing 737  
 S-9 Landing Charges for Airbus 320  
 S-10 Combined Landing and Passenger Charges

3.2.1a Number of Gates – Asia Pacific  
 3.2.1b Number of Gates – Europe  
 3.2.1c Number of Gates – North America  
 3.2.2a Passenger Terminal Size – Asia Pacific  
 3.2.2b Passenger Terminal Size – Europe  
 3.2.2c Passenger Terminal Size – North America  
 3.3a Number of Employees – Asia Pacific  
 3.3b Number of Employees – Europe  
 3.3c Number of Employees – North America  
 3.4.1a Passenger Traffic – Asia Pacific  
 3.4.1b Passenger Traffic – Europe  
 3.4.1c Passenger Traffic – North America  
 3.4.1d International Share Passenger Traffic – Asia Pacific  
 3.4.1e International Share Passenger Traffic – Europe  
 3.4.1f International Share Passenger Traffic – North America  
 3.4.1g Seat Share of Inter-Continental Flights – Asia Pacific  
 3.4.1h Seat Share of Inter-Continental Flights – Europe  
 3.4.1i Seat Share of Inter-Continental Flights – North America  
 3.4.2a Cargo Traffic – Asia Pacific  
 3.4.2b Cargo Traffic – Europe  
 3.4.2c Cargo Traffic – North America

3.4.3a	Work Load Units (WLU) – Asia Pacific	4.4.5a	Passengers per Gate vs. Share of International Traffic
3.4.3b	Work Load Units (WLU) – Europe	4.4.5b	Passengers per Square Meter of Terminal Space vs. Share of International Traffic
3.4.3c	Work Load Units (WLU) – North America	4.4.5c	Aircraft Movement per Runway vs. Share of International Traffic
3.4.4a	Aircraft Movement – Asia Pacific	4.4.6a	Passengers per Unit of Soft Cost Input vs. Airport Size
3.4.4b	Aircraft Movement – Europe	4.4.6b	Soft Cost Input Productivity vs. Airport Size
3.4.4c	Aircraft Movement – North America	4.4.7a	Passengers per Unit of Soft Cost Input vs. Share of International Traffic
3.4.5a	Passengers per Aircraft Movement – Asia Pacific	4.4.7b	Soft Cost Input Productivity vs. Share of International Traffic
3.4.5b	Passengers per Aircraft Movement – Europe	4.4.8a	Variable Factor Productivity vs. Airport Size
3.4.5c	Passengers per Aircraft Movement – North America	4.4.8b	Variable Factor Productivity vs. Share of International Traffic
3.5a	Share of Flights by Dominant Carrier – Asia Pacific	4.4.8c	Variable Factor Productivity vs. Share of Cargo Traffic
3.5b	Share of Flights by Dominant Carrier – Europe	4.4.8d	Variable Factor Productivity vs. Share of Non-Aeronautical Revenue
3.5c	Share of Flights by Dominant Carrier – North America	4.5.2a1	Residual Variable Factor Productivity – Asia
4.2.1.1a	Passengers per Employee – Asia Pacific	4.5.2a1	Residual Variable Factor Productivity – Asia (over 40 million passengers)
4.2.1.1b	Passengers per Employee – Europe	4.5.2a2	Residual Variable Factor Productivity – Asia (10-40 million passengers)
4.2.1.1c	Passengers per Employee – North America	4.5.2a1	Residual Variable Factor Productivity – Asia (under 10 million passengers)
4.2.1.2a	Aircraft Movements per Employee – Asia Pacific	4.5.2a4	Residual Variable Factor Productivity – Oceania
4.2.1.2b	Aircraft Movements per Employee – Europe	4.5.2a5	Residual Variable Factor Productivity – Asia Pacific Airport Groups
4.2.1.2c	Aircraft Movements per Employee – North America	4.5.2b1	Residual Variable Factor Productivity – Europe (over 25 million passengers)
4.2.1.3a	Work Load Units (WLU) per Employee – Asia Pacific	4.5.2b2	Residual Variable Factor Productivity – Europe (10-25 million passengers)
4.2.1.3b	Work Load Units (WLU) per Employee – Europe	4.5.2b3	Residual Variable Factor Productivity – Europe (under 10 million passengers)
4.2.1.3c	Work Load Units (WLU) per Employee – North America	4.5.2b4	Residual Variable Factor Productivity – Europe (airport groups)
4.2.1.4a	Overall Labor Productivity – Asia Pacific	4.5.2c1	Residual Variable Factor Productivity – North America (over 40 mil. passengers)
4.2.1.4b	Overall Labor Productivity – Europe	4.5.2c2	Residual Variable Factor Productivity – North America (25-40 mil. passengers)
4.2.1.4c	Overall Labor Productivity – North America	4.5.2c3	Residual Variable Factor Productivity – North America (10-25 mil. passengers)
4.2.2.1a	Passengers per Gate – Asia Pacific	4.5.2c4	Residual Variable Factor Productivity – North America (under 10 mil. Passengers)
4.2.2.1b	Passengers per Gate – Europe	5.1.1a	Labour Cost Share – Asia Pacific
4.2.2.1c	Passengers per Gate – North America	5.1.1b	Labour Cost Share – Europe
4.2.2.2a	Passengers per Square Meter of Terminal Area – Asia Pacific	5.1.1c	Labour Cost Share – North America
4.2.2.2b	Passengers per Square Meter of Terminal Area – Europe	5.2.1a	Labour Cost per Passenger – Asia Pacific
4.2.2.2c	Passengers per Square Meter of Terminal Area – North America	5.2.1b	Labour Cost per Passenger – Europe
4.2.2.3a	Aircraft Movements per Runway – Asia Pacific	5.2.1c	Labour Cost per Passenger – North America
4.2.2.3b	Aircraft Movements per Runway – Europe	5.2.2a	Labour Cost per Aircraft Movement – Asia Pacific
4.2.2.3c	Aircraft Movements per Runway – North America	5.2.2b	Labour Cost per Aircraft Movement – Europe
4.2.3.1a	Productivity of Soft Cost Inputs with Passengers as Output – Asia Pacific	5.2.2c	Labour Cost per Aircraft Movement – North America
4.2.3.1b	Productivity of Soft Cost Inputs with Passengers as Output – Europe	5.2.3a	Labour Cost per Work Load Unit – Asia Pacific
4.2.3.1c	Productivity of Soft Cost Inputs with Passengers as Output – North America	5.2.3b	Labour Cost per Work Load Unit – Europe
4.2.3.2a	Soft Cost Input Productivity – Overall Output Index – Asia Pacific	5.2.3c	Labour Cost per Work Load Unit – North America
4.2.3.2b	Soft Cost Input Productivity – Overall Output Index – Europe	5.2.4a	Variable Cost per Passenger – Asia Pacific
4.2.3.2c	Soft Cost Input Productivity – Overall Output Index – North America	5.2.4b	Variable Cost per Passenger – Europe
4.3a	Gross Variable Factor Productivity – Asia Pacific	5.2.4c	Variable Cost per Passenger – North America
4.3b	Gross Variable Factor Productivity – Europe	5.2.5a	Variable Cost per Aircraft Movement – Asia Pacific
4.3c	Gross Variable Factor Productivity – North America	5.2.5b	Variable Cost per Aircraft Movement – Europe
4.4.1a	Passengers per Employee vs. Airport Size	5.2.5c	Variable Cost per Aircraft Movement – North America
4.4.1b	Labour Productivity vs. Airport Size	5.2.6a	Variable Cost per Work Load Unit – Asia Pacific
4.4.2a	Passengers per Employee vs. Share of International Traffic	5.2.6b	Variable Cost per Work Load Unit – Europe
4.4.2b	Labour Productivity vs. Share of International Traffic	5.2.6c	Variable Cost per Work Load Unit – North America
4.4.3a	Passengers per Employee vs. Share of Cargo Traffic	5.2.7a	Unit Variable Cost Index – Asia Pacific
4.4.3b	Labour Productivity vs. Share of Cargo Traffic	5.2.7b	Unit Variable Cost Index – Europe
4.4.4a	Passengers per Gate vs. Airport Size	5.2.7c	Unit Variable Cost Index – North America
4.4.4b	Passengers per Terminal Square Meter Area vs. Airport Size	5.3.1.1a	Average Annual Employee Compensation – Asia Pacific
4.4.4c	Aircraft Movements per Runway vs. Airport Size	5.3.1.1b	Average Annual Employee Compensation – Europe
		5.3.1.1c	Average Annual Employee Compensation – North America
		5.3.1.2a	Variable Input Price Index – Asia Pacific
		5.3.1.2b	Variable Input Price Index – Europe
		5.3.1.2c	Variable Input Price Index – North America

5.3.2	Unit Variable Cost vs. Labour Price	6.3.4a	Current Ratio – Asia Pacific
5.3.3	Unit Variable Cost vs. Airport Size	6.3.4b	Current Ratio – Europe
5.3.4a	Unit Variable Cost vs. Aircraft Size	6.3.4c	Current Ratio – North America
5.3.4b	Unit Variable Cost vs. Share of International Traffic	6.3.5a	Return on Assets – Asia Pacific
5.3.4c	Unit Variable Cost vs. Share of Non-Aeronautical Revenue	6.3.5b	Return on Assets – Europe
5.4a1	Cost Competitiveness – Asia (over 40 million passengers)	6.3.5c5-49	Return on Assets – North America
5.4a2	Cost Competitiveness – Asia (10-40 million passengers)	6.3.6a5-49	Return on Equity – Asia Pacific
5.4a3	Cost Competitiveness – Asia (under 10 million passengers)	6.3.6b5-49	Return on Equity – Europe
5.4a4	Cost Competitiveness – Oceania	6.3.6c5-50	Return on Equity – United States
5.4a5	Cost Competitiveness – Asia Pacific Airport Groups	6.3.6d5-50	Return on Retained Earnings – Canada
5.4b1	Cost Competitiveness – Europe (over 25 million passengers)	6.3.7a5-51	Debt-Assets Ratio – Asia Pacific
5.4b2	Cost Competitiveness – Europe (10-25 million passengers)	6.3.7b5-51	Debt-Assets Ratio – Europe
5.4b3	Cost Competitiveness – Europe (under 10 million passengers)	6.3.7c5-51	Debt-Assets Ratio – North America
5.4b4	Cost Competitiveness – Europe (Airport Groups)	6.3.8a5-51	Debt-Equity Ratio – Asia Pacific
5.4c1	Cost Competitiveness – North America (over 40 mil. Passengers)	6.3.8b5-52	Debt-Equity Ratio – Europe
5.4c2	Cost Competitiveness – North America (25-40 mil. passengers)	6.3.8c5-52	Debt-Equity Ratio – United States
5.4c2	Cost Competitiveness – North America (10-25 mil. passengers)	5-52	
5.4c2	Cost Competitiveness – North America (under 10 mil. passengers)	7.2a 5-52	Terminal Charge per Passenger (International Flights) – Asia Pacific
		7.2b	Terminal Charge per Passenger (International Flights) – Europe
		7.2c	Average (Terminal) Revenue per Passenger – North America
		7.4	Cost per Enplaned Passenger – North America
6.1.1a	Non-Aeronautical Revenue Share – Asia Pacific		
6.1.1b	Non-Aeronautical Revenue Share – Europe		
6.1.1c	Non-Aeronautical Revenue Share – North America		
6.1.3a	Concession Revenue Share – Asia Pacific		
6.1.3b	Concession Revenue Share – Europe		
6.1.3c	Concession Revenue Share – North America		
6.1.4a	Parking Revenue Share – Asia Pacific		
6.1.4b	Parking Revenue Share – Europe		
6.1.4c	Parking Revenue Share – North America		
6.2.1a	Aeronautical Revenue per Aircraft Movement – Asia Pacific		
6.2.1b	Aeronautical Revenue per Aircraft Movement – Europe		
6.2.1c	Aeronautical Revenue per Aircraft Movement – North America		
6.2.2a	Concession Revenue per Passenger – Asia Pacific		
6.2.2b	Concession Revenue per Passenger – Europe		
6.2.2c	Concession Revenue per Passenger – North America		
6.2.3a	Operating Revenue per Passenger – Asia Pacific		
6.2.3b	Operating Revenue per Passenger – Europe		
6.2.3c	Operating Revenue per Passenger – North America		
6.2.4a	Operating Revenue per Aircraft Movement – Asia Pacific		
6.2.4b	Operating Revenue per Aircraft Movement – Europe		
6.2.4c	Operating Revenue per Aircraft Movement – North America		
6.2.5a	Operating Revenue per Work Load Unit – Asia Pacific		
6.2.5b	Operating Revenue per Work Load Unit – Europe		
6.2.5c	Operating Revenue per Work Load Unit – North America		
6.2.6a	Operating Revenue per Employee – Asia Pacific		
6.2.6b	Operating Revenue per Employee – Europe		
6.2.6c	Operating Revenue per Employee – North America		
6.3.1a	Net Operating Income – Asia Pacific		
6.3.1b	Net Operating Income – Europe		
6.3.1c	Net Operating Income – North America		
6.3.2a	EBITDA – Asia Pacific		
6.3.2b	EBITDA – Europe		
6.3.2c	EBITDA – North America		
6.3.3a	Operating Margin – Asia Pacific		
6.3.3b	Operating Margin – Europe		
6.3.3c	Operating Margin – North America		



# Airport Benchmarking Report Order Form

First Name: \_\_\_\_\_ Last Name: \_\_\_\_\_ Organization \_\_\_\_\_

Address: \_\_\_\_\_

City \_\_\_\_\_ State/Province \_\_\_\_\_ Country/ZIP \_\_\_\_\_

Phone: \_\_\_\_\_ Email: \_\_\_\_\_

## I. Please select the report(s) you would like to order:

- 2017 report (PDF version): **US\$950**
- 2016 report (PDF version): **US\$750**
- 2015 report (PDF version): **US\$500**
- 2014 report (PDF version): **US\$500**
- 2013 report (PDF version): **US\$300**
- 2012 report (PDF version): **US\$300**
- 2011 report (PDF version): **US\$300**
- 2010 report (PDF version): **US\$300**
- 2009 report (PDF version): **US\$300**
- 2008 report (PDF version): **US\$300**
- 2007 report (PDF version): **US\$300**

**Please return to:**

Air Transport Research Society  
(ATRS)  
Attn to: Dr. Chunyan Yu

Tel: 386-226-6723

Email: [benchmarking@atrsworld.org](mailto:benchmarking@atrsworld.org)

Website: [www.atrsworld.org](http://www.atrsworld.org)

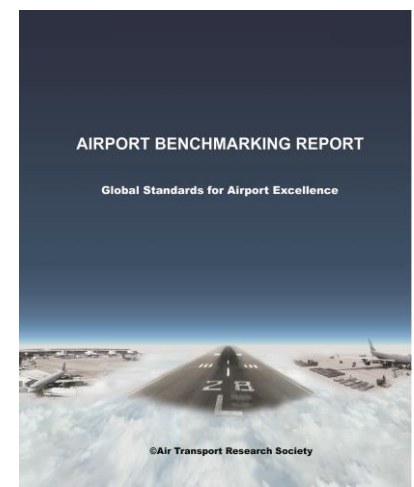
**OPTIONAL: An additional US\$120 for each PRINTED copy**

\* Leave this section blank if only PDF versions are required

Year(s): \_\_\_\_\_

## II. Payment Method:

- Wire Transfer:  
Send (e-mail or fax) this completed form to us to obtain wire transfer instructions.
- Check or Money Order  
(payable to Embry-Riddle Aeronautical University)
- Please tick if you are an individual or corporate member of ATRS



**Please note that Credit card payments are only accepted if you purchase report online**